

FEATURES BY PRINCE'S LANDSCAPE

**PLANTS for RENTAL**

[www.princelandscape.com](http://www.princelandscape.com)

---



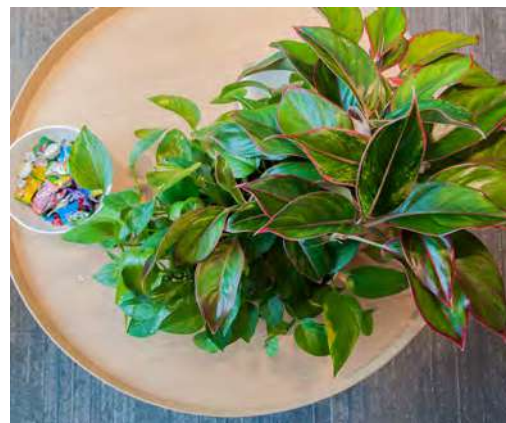
**“As Changi embarks on development plants to meet the demands of growing traffic in the years to come, we endeavor to continue innovating and improving airport operations across all aspects. We look forward to another year of close partnership with you, where together, we will deliver a seamless and memorable experience for all who travel through Changi.**

**Thank you once again for your continued strong support. We could not have done it without you.”**

**- Executive Vice President  
Airport Management / Changi Airport Group**



# features



## ABOUT FEATURES

FEATURES offers a wide variety of hydroplants which appeals to anyone's choice.

Plants are set up in a self-monitoring system with a water indicator displaying the water level. Watering between intervals vary from 15-60 days. Plants are available for rental which suits any corporate office.

- I** INDOOR
- S** SEMI-SHADED
- O** OUTDOOR

To ensure selection of plants are in order, we have made recommendations on suitable species for indoor, outdoor, and semi-shaded areas.

For more information, please contact us.

## R8239

### Description

Suitable for indoor and semi-shaded plants; Polyethylene; Fabricated in Singapore; Available in Black, Ivory and Red

### Dimensions

39cm (D) x 82cm (H)

### Available Colours





*Aglaonema 'diamond bay'*

I

Overall Height  
3' - 4'



*Aglaonema 'silver queen'*

I

Overall Height  
3' - 4'



*Chamaedorea seifrizii*

I S

Overall Height  
4' - 5'



*Calathea makoyana*

I S

Overall Height  
3' - 4'



*Dracaena fragrans*

I S

Overall Height  
5' - 6'



*Dracaena surculosa*

I O S

Overall Height  
5' - 6'





*Dracaena gymilis*

I S

Overall Height  
5' - 6'



*Ficus lyrata*

I S

Overall Height  
5' - 6'



*Dypsis lutescens*

I O S

Overall Height  
5' - 6'



*Ficus elastica*

I O S

Overall Height  
4' - 5'



*Epipremnum aureum*

I

Overall Height  
5' - 6'



*Dracaena fragrans 'green'*

I S

Overall Height  
5' - 6'



I S

*Licuala grandis*

Overall Height  
5' - 6'



I

*Pachira*

Overall Height  
5' - 6'



I

*Philodendron 'gold'*

Overall Height  
5' - 6'



I

*Philodendron 'green heart'*

Overall Height  
5' - 6'



I

*Philodendron 'congo red'*

Overall Height  
3' - 4'



I O S

*Pleomele reflexa*

Overall Height  
4' - 5'





*Rhapis excelsa*

I O S

Overall Height  
5' - 6'



*Schefflera arboricola*

I O S

Overall Height  
4' - 5'



*Rhapis multifida*

I O S

Overall Height  
5' - 6'



*Spathiphyllum*

I

Overall Height  
3' - 4'



*Sanseveria*

I O S

Overall Height  
3' - 4'



*Zamioculcas*

I

Overall Height  
3' - 4'



I

## *Dendrobium*

Overall Height  
3' - 4'



I

## *Phalaenopsis*

Overall Height  
5' - 6'

INDOOR

I

OUTDOOR

O

SEMI-SHADED

S

To ensure selection of plants are in order, Prince's have made recommendations on suitable species for indoor, outdoor, and semi-shaded areas.

For more information, please contact us.



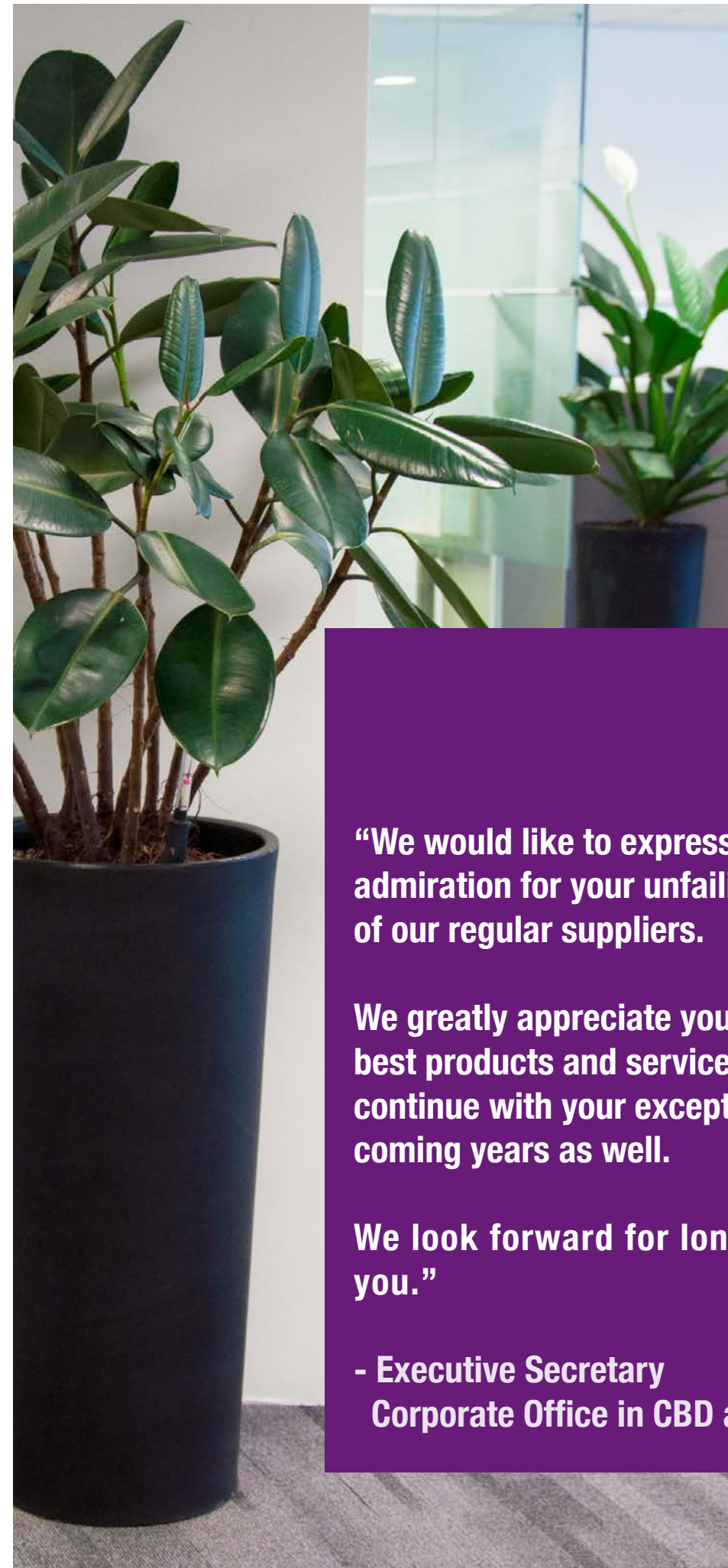


FEATURES BY PRINCE'S LANDSCAPE

# PLANTERS CATALOGUE

[www.princelandscape.com](http://www.princelandscape.com)

---



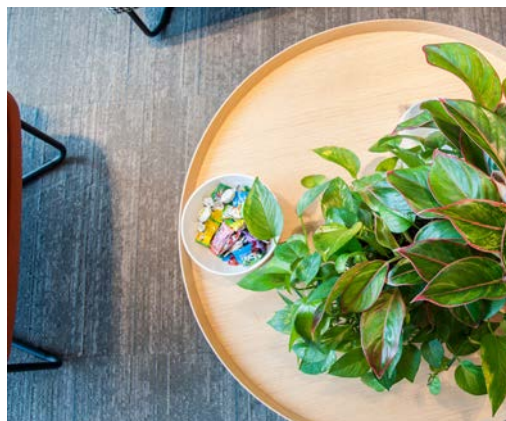
**“We would like to express to you our warmest admiration for your unfailing service to us as one of our regular suppliers.**

**We greatly appreciate your efficiency in providing best products and service. We also hope you will continue with your exceptional service in the coming years as well.**

**We look forward for long association with you.”**

**- Executive Secretary  
Corporate Office in CBD area**





## CORPORATE PROFILE

One of the oldest nurseries in Singapore, Prince's has 50 years experience in the industry. Started out humbly as a flower shop, Prince's has evolved into a full-fledge landscape design and installation specialist.

Presently blessed with 2 nurseries and a headcount of more than 400 professionals, horticulturists, designers, engineers, florists and support staff, Prince's success is attributable to this dedicated and qualified team which also undergoes a rigorous training and development program, allowing us to be uniquely customer- and product-oriented at the same time.

At the international front, our global connections ensure that Prince's meets the needs of our customers. Strategic alliances with Europe, Australasia and Asia have been a boon to our service-oriented culture.

With success comes responsibilities. Our company believes firmly in CSR and we are a conscious participant in environmental conservation as well as an active institution for the disabled, reformed and older workforce.



**Redecorate your office spaces and make them a more comfortable place to work in. FEATURES by Prince's Landscape offers a wide variety of hydroplants which appeals to anyone's choice.**

**Plants are set up in a self-monitoring system with a water indicator displaying the water level. Watering between intervals vary from 15-60 days. Plants are also available for rent.**





## S3636

### Description

Suitable for indoor plants; Fibre plastic; Imported

### Dimensions

36cm (L) x 36cm (W) x 36cm (H)

### Available Colours



## R3637

### Description

Suitable for indoor plants; Fibre plastic; Imported

### Dimensions

37cm (D) x 36cm (H)

### Available Colours



## C7540

### Description

Suitable for indoor plants; Polyethylene; Fabricated in Singapore

### Dimensions

40cm (L) x 40cm (W) x 75cm (H)

### Available Colours



## REP Series

### Description

Suitable for both indoor and outdoor plants; Polyethylene; Imported

### Dimensions

**REP 7130** 710 mm x 300 mm x 300 mm

**REP 7630** 760 mm x 300 mm x 300 mm

**REP 9135** 910 mm x 350 mm x 350 mm

### Available Colours



## RG5733

### Description

Suitable for indoor plants; Fibre plastic; Imported

### Dimensions

33cm (D) x 57cm (H)

### Available Colours



## REP 7860

### Description

Suitable for indoor plants; Fibre plastic; Imported

### Dimensions

78cm (L) x 40cm (W) x 60cm (H)

### Available Colours



## R8239

### Description

Suitable for indoor plants;  
Polyethylene; Fabricated in Singapore

### Dimensions

39cm (D) x 82cm (H)

### Available Colours



## TAU Series



## Taperus 1050

### Description

Matte Textured Plant Pot

### Dimensions

500 mm(L) x 500 mm(W) x 500 mm(H)

### Available Colours



## Symmetria 1270

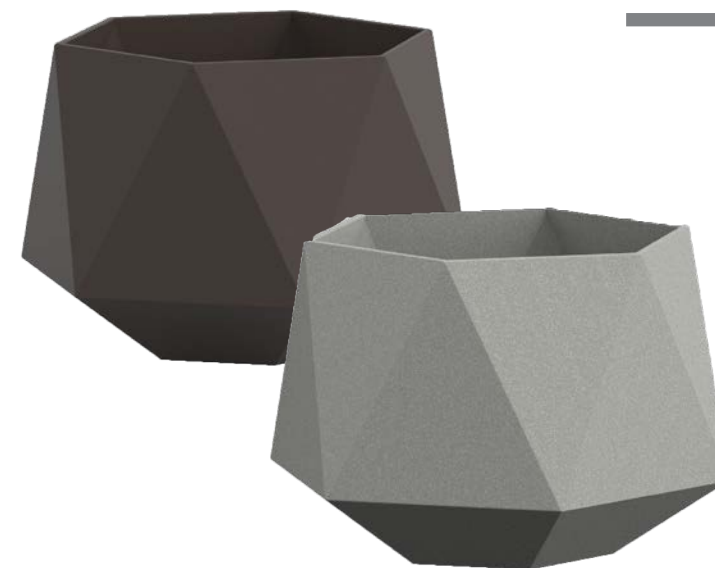
### Description

Matte Finish Plant Pot

### Dimensions

600 mm(L) x 520 mm(W) x 400 mm(H)

### Available Colours







Turrim 4310

**Description**  
Matte Metallic Plant Pot

**Dimensions**  
550 mm(L) x 550 mm(W) x 1100 mm(H)

**Available Colours**



Mesa 6230

**Description**  
Matte Rectangular Plant Pot

**Dimensions**  
660 mm(L) x 180 mm(W) x 180 mm(H)

**Available Colours**

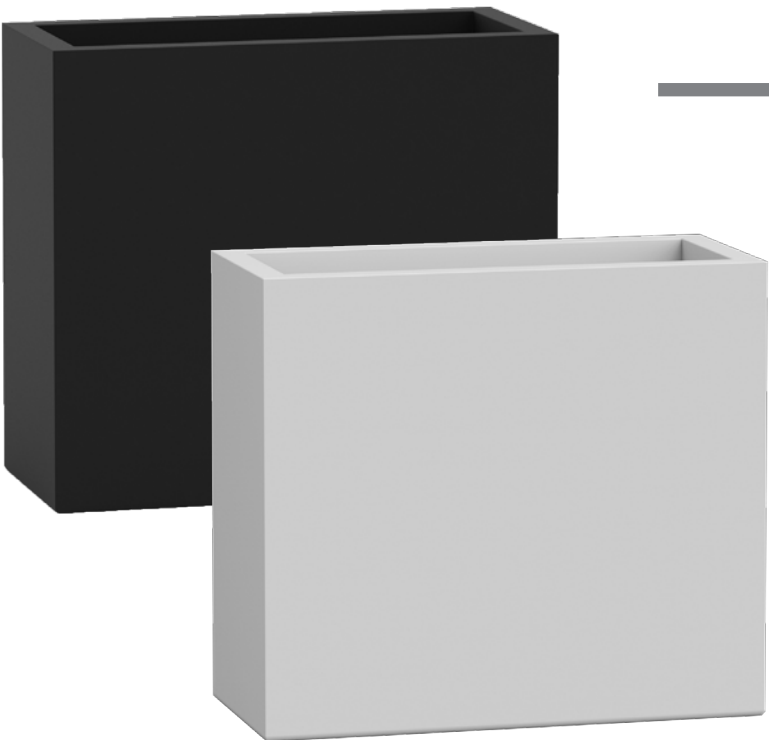


Striata 5600

**Description**  
Matte Mettalic Plant Pot

**Dimensions**  
660 mm(L) x 660 mm(W) x 800 mm(H)

**Available Colours**



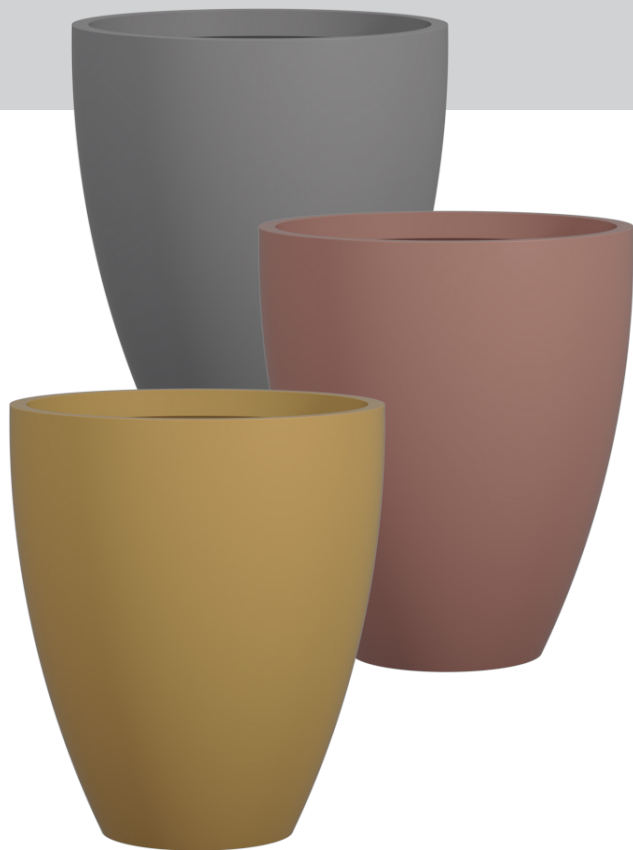
Divinum 8990

**Description**  
Matte Finish Plant Pot

**Dimensions**  
910 mm(L) x 410 mm(W) x 810 mm(H)

**Available Colours**





## Rotunda 5205

**Description**

Round metallic planter with a tapered base

**Dimensions**

680 mm(L) x 680 mm(W) x 790 mm(H)

**Available Colours**



## Merlot 5840

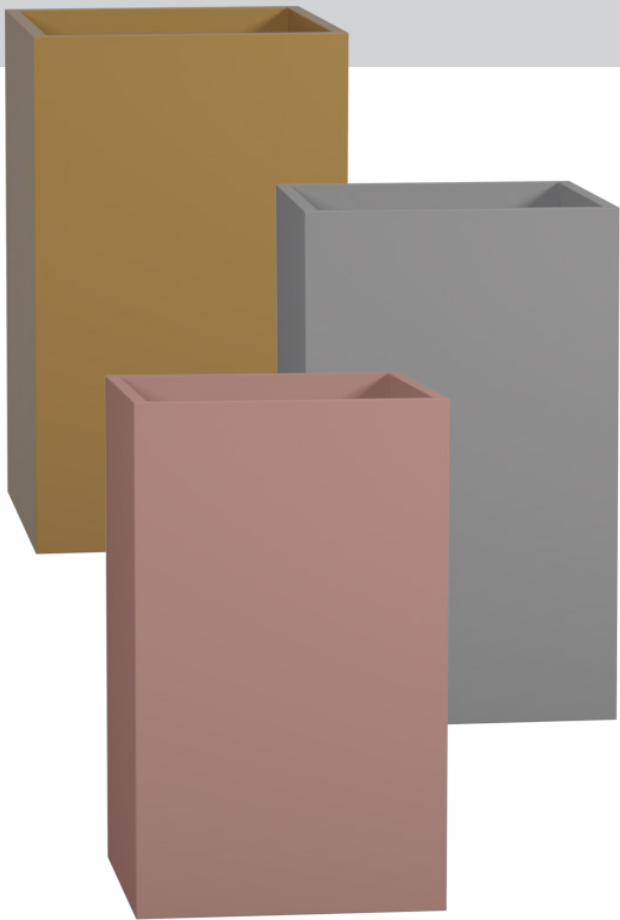
**Description**

Round metallic planter

**Dimensions**

560 mm(L) x 560 mm(W) x 665 mm(H)

**Available Colours**



## Quadrum 8310

**Description**

Tall square metallic planter box with built in fiberglass reinforcements on the side walls and bottom

**Dimensions**

580 mm(L) x 580 mm(W) x 940 mm(H)

**Available Colours**



# Features Nordic Planter Series



**Description**  
Nordic Planter with Stand

**Pot Dimensions**  
200mm(D) x 170 mm(H)  
230mm(D) x 200mm(H)  
250mm(D) x 200mm(H)

**Stand Height**  
470mm | 700mm | 900mm



Re-spraying of pots available upon request.

Re-spraying of pots available upon request.



# Tabletop Planters

**All tabletop planters are:**

- Suitable for indoor plants
- Fibre plastic
- Imported



## TS1021

**Dimensions**

21cm (L) x 21cm (W) x 10cm (H)

**Available Colours**



## TS1313

**Dimensions**

13cm (L) x 13cm (W) x 13.5cm (H)

**Available Colours**



## TO1122

**Dimensions**

22cm (D) x 11.2cm (H)

**Available Colours**



## TS1815

**Dimensions**

15cm (L) x 15cm (W) x 18.5cm (H)

**Available Colours**



## TR1315

**Dimensions**

15cm (D) x 12.7cm (H)

**Available Colours**



## TR1613

**Dimensions**

13cm (D) x 15.5cm (H)

**Available Colours**



## TS1315

**Dimensions**

15cm (L) x 15cm (W) x 13cm (H)

**Available Colours**



## TS1910

**Dimensions**

9.8cm (L) x 9.8cm (W) x 18.5cm (H)

**Available Colours**





S5130, S6132, S8239 (Brown)

**Dimensions**

S5130	30cm (D) X 51cm (H)
S6132	32cm (D) X 61cm (H)
S8239	39cm (D) X 82cm (H)

**Also available in**



Black



Grey



White



T5703 (Grey)

**Dimensions** 30cm (D) x 57cm (H)

**Also available in**



Black



Brown



White





R7640 (Black)

**Dimensions** 40cm (D) x 76cm (H)

**Also available in**



Grey



White



P3456 (Black)

**Dimensions** 56cm (L) x 28cm (W) x 34cm (H)

**Also available in**



White







FEATURES BY PRINCE'S LANDSCAPE

# TABLETOP PLANTS CATALOGUE

[www.princelandscape.com](http://www.princelandscape.com)

---



## Anthurium & Money Plant Tabletop Plant

### Description

Suitable for indoor; Available in Black and White Planter

### Dimensions of Planter

21cm (L) x 21cm (W) x 10cm (H)



## Philodendron gold Tabletop Plant

### Description

Suitable for indoor; Available in Black, White, and Red Planter

### Dimensions of Planter

15cm (D) x 15.5cm (H)



## Aglaonema 'silver queen' Tabletop Plant

### Description

Suitable for indoor; Available in Black, White, and Red Planter

### Dimensions of Planter

15cm (D) x 15.5cm (H)



## Peperomia variegated Tabletop Plant

### Description

Suitable for indoor; Available in Black, White, and Red Planter

### Dimensions of Planter

15cm (D) x 15.5cm (H)



## Calathea makoyana, Fern, Sanseveria dwarf & Fittonia red Tabletop Plant

### Description

Suitable for indoor; Available in Black and White Planter

### Dimensions of Planter

21cm (L) x 21cm (W) x 10cm (H)



## Sanseveria dwarf Tabletop Plant

### Description

Suitable for indoor; Available in Black, White, and Red Planter

### Dimensions of Planter

22cm (D) x 11.2cm (H)



## Epipremnum aureum Tabletop Plant

### Description

Suitable for indoor; Available in Black, White, and Red Planter

### Dimensions of Planter

22cm (D) x 11.2cm (H)



## Aglaonema red Tabletop Plant

### Description

Suitable for indoor; Available in Black, White, and Red Planter

### Dimensions of Planter

22cm (D) x 11.2cm (H)





FEATURES BY PRINCE'S LANDSCAPE

# LIVEPICTURE CATALOGUE

[www.princelandscape.com](http://www.princelandscape.com)





## CORPORATE PROFILE

One of the oldest nurseries in Singapore, Prince's has 50 years experience in the industry. Started out humbly as a flower shop, Prince's has evolved into a full-fledge landscape design and installation specialist.

Presently blessed with 2 nurseries and a headcount of more than 400 professionals, horticulturists, designers, engineers, florists and support staff, Prince's success is attributable to this dedicated and qualified team which also undergoes a rigorous training and development program, allowing us to be uniquely customer- and product-oriented at the same time.

At the international front, our global connections ensure that Prince's meets the needs of our customers. Strategic alliances with Europe, Australasia and Asia have been a boon to our service-oriented culture.

With success comes responsibilities. Our company believes firmly in CSR and we are a conscious participant in environmental conservation as well as an active institution for the disabled, reformed and older workforce.







**LivePicture, an ingenious product of a Europe-based company, Mobilane, is finally distributed to Singapore by Prince's.**

**LivePicture, living picture made of plants, embodies innovation, design and landscaping to deliver stunning effects. The frame includes an integrated watering system with reservoir to ensure that the plants are provided with water for four to six weeks. The innovative patented construction requires no electric power.**

**LivePicture can be easily and quickly mounted on any brick or reinforced concrete wall using just a few screws.**

All pictures and information related to LivePicture products are provided by Mobilane.



Plants make an important contribution to the indoor climate, through their production of oxygen, purification of the air and positive effect on relative humidity. Scientific research has shown that anyone who spends more than four hours per day in a room with plants will find it more comfortable and will be demonstrably more productive.

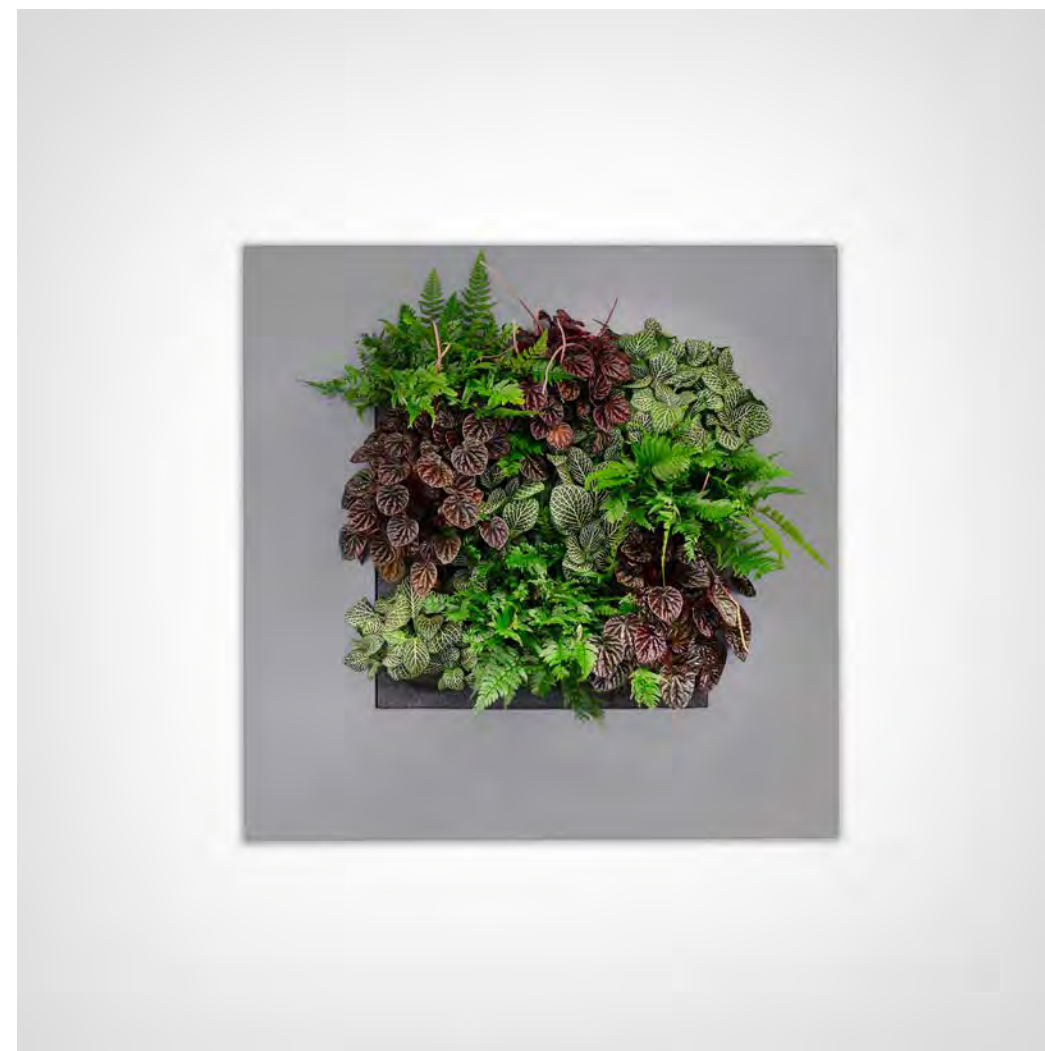
LivePicture is a stylish and space-saving solution to the use of plants in any interior environment. Rooms with limited space for plant pots will benefit from wall-mounted placement of LivePicture.

LivePicture requires minimal maintenance. It uses a system of plant cassettes that are easily exchangeable. Plants can be changed with ease, for instance to reflect the season or for special occasions such as Christmas or Chinese New Year.



## BENEFITS

- Exchangeable cassettes
- Water supply for 4 to 6 weeks
- Integrated watering system
- No electricity or pump required
- Quick and easy installation
- Smart and silent full and empty indicators
- Can be personalised
- Exchangeable frame
- Modern design
- Improves the room's acoustics
- Contributes to a healthy indoor climate through oxygen production and fine-dust capture



## LivePicture 1

**Size (W x H x D)** 72cm x 72cm x 7cm

**Number of Cassettes** 1

**Weight (empty)** 12.0 kg

**Volume (litre)** 14 ltr

**Available Colours**



Silver Grey Anthracite





## LivePicture 2

**Size (W x H x D)** 112cm x 72cm x 7cm

**Number of Cassettes** 2

**Weight (empty)** 16.6 kg

**Volume (litre)** 19 ltr

**Available Colours**



Silver Grey Anthracite

All pictures and information related to LivePicture products are provided by Mobilane.



## LIVEPICTURE GO

### EASY GREEN

Add vertical green innovation to your living, learning or work environment with the impressive LivePicture GO. Its simplicity means you don't even need green fingers to enjoy the beauty of plants. LivePicture GO has its own indicator that will let you know when the water tank needs filling. It has enough water storage capacity to supply sufficient water for 2 - 4 weeks. LivePicture GO has a capillary feature within the plant cassette ensuring the plants are supplied with the correct amount of water without you needing to think about it.

### FUN GREEN

Enjoy the freedom and creativity of LivePicture GO. You can create your own designs or even a wall collage by installing multiple LivePicture GO's. LivePicture GO's versatility means it can be used both indoor and outdoor, as single or multiple units. Its plant cassette are easily removable and you can fill the pockets with plants that match your own taste, allowing you complete flexibility to suit your own preferences or change them whenever you choose. Mounting your living plant picture is easy too, the two screws and installation guide we provide. Choosing LivePicture GO will give you all the advantages of bringing a green environment into your space; it makes people happier, it creates a healthier indoor climate, improves air quality and of course it's beautiful too!



# LIVEPICTURE GO



## LivePicture GO

**Size (W x H x D)** 51.6 x 51.6 x 11.2cm

**Weight (empty)** 2.7 kg excluding water & plants | +/-5kg including water & plants

### Available Colours



Black



White



Grey



Red



## LivePicture GO - Bamboo Series



Bamboo Natural



Bamboo Black



# THE GLASS GARDEN

BY PRINCE'S LANDSCAPE



FEATURES BY PRINCE'S LANDSCAPE

## **TERRARIUM CATALOGUE**

[www.princelandscape.com](http://www.princelandscape.com)

---



A terrarium is a glass container with soil and plants, creating miniature landscapes. Choose from these arrangements and add some green into your office spaces.



## Fishbowl Terrarium (XS)

### Description

Suitable for indoor; The plant breed and materials are subjected to availability. If out of stock, we will replace with the next suitable substitute and designs remain similar.

### Diameter

Approximately 15cm

### Plants

3 Assorted succulents



## Fishbowl Terrarium (S)

### Description

Suitable for indoor; The plant breed and materials are subjected to availability. If out of stock, we will replace with the next suitable substitute and designs remain similar.

### Diameter

Approximately 20cm - 22cm

### Plants

5-6 Assorted succulents



## Square Geometrical Terrarium

### Description

Suitable for indoor; The plant breed and materials are subjected to availability. If out of stock, we will replace with the next suitable substitute and designs remain similar.

### Side Length

Approximately 15cm

### Plants

3-4 Assorted succulents



## Fishbowl Terrarium (M)

### Description

Suitable for indoor; The plant breed and materials are subjected to availability. If out of stock, we will replace with the next suitable substitute and designs remain similar.

### Diameter

Approximately 25cm - 30cm

### Plants

6-8 Assorted succulents

## Wide Cylindrical (M)

### Description

Suitable for indoor; The plant breed and materials are subjected to availability. If out of stock, we will replace with the next suitable substitute and designs remain similar.

### Dimensions

29 cm D x 9.5 cm H

### Plants

4-5 Assorted succulents



## Fishbowl Terrarium (S)

### Description

Suitable for indoor; The plant breed and materials are subjected to availability. If out of stock, we will replace with the next suitable substitute and designs remain similar.

### Dimensions

19 cm D x 14.5 cm H

### Plants

4-5 Assorted succulents



## Heart (M)

### Description

Suitable for indoor; The plant breed and materials are subjected to availability. If out of stock, we will replace with the next suitable substitute and designs remain similar.

### Dimensions

24 cm L x 17 cm W x 9 cm H

### Plants

4-5 Assorted succulents



## Angled Bowl (XS)

### Description

Suitable for indoor; The plant breed and materials are subjected to availability. If out of stock, we will replace with the next suitable substitute and designs remain similar.

### Dimensions

12.5 cm D x 11.5 cm H

### Plants

2-3 Assorted succulents







## Cuboid (S)

### Description

Suitable for indoor; The plant breed and materials are subjected to availability. If out of stock, we will replace with the next suitable substitute and designs remain similar.

### Dimensions

15 cm L x 15 cm W x 15 cm H

### Plants

3-4 Assorted succulents



## Cuboid (MINI)

### Description

Suitable for indoor; The plant breed and materials are subjected to availability. If out of stock, we will replace with the next suitable substitute and designs remain similar.

### Dimensions

7.5 cm L x 7.5 cm W x 7.5 cm H

### Plants

1 succulent



## Cuboid (XS)

### Description

Suitable for indoor; The plant breed and materials are subjected to availability. If out of stock, we will replace with the next suitable substitute and designs remain similar.

### Dimensions

10 cm L x 10 cm W x 10 cm H

### Plants

2 Assorted succulents



## Fish Bowl (XS)

### Description

Suitable for indoor; The plant breed and materials are subjected to availability. If out of stock, we will replace with the next suitable substitute and designs remain similar.

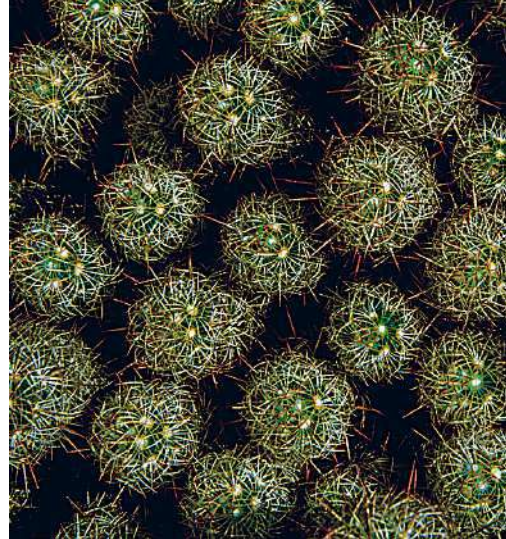
### Dimensions

11cm D x 9cm H

### Plants

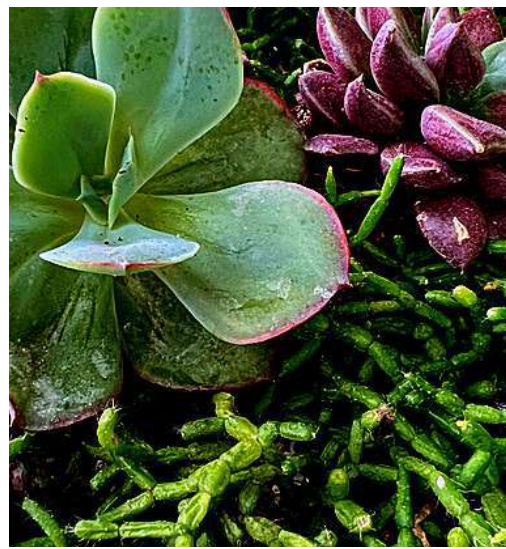
2 Assorted succulents





*features*  
BY PRINCE'S LANDSCAPE

# *Green Oases*






A full-page background image of a dense, misty forest. Tall, slender trees with moss-covered trunks stand vertically. Sunlight filters through the thick canopy of green leaves, creating a soft, ethereal glow. The ground is covered in lush green undergrowth and moss.

## *The Story*

Nature has always been humankind's source of rest, inspiration, and relief. But our modern lives have trapped us into tiny boxes. Our days have turned into endless pursuits of ambition, and filled with pressure. Nowadays, to be able to step away from our thoughts and responsibilities has become a luxury. Our mini naturescapes are meant to be pocket oases in our tiny concrete spaces. Our arrangements are inspired by familiar sights and scenes from nature which we've recreated through preserved moss and flowers, rocks, or succulents. They are meant to provide a much needed escape by bringing a small piece of nature back into their homes and offices.





There is much to learn from succulents—  
they thrive and flourish despite their harsh  
and hard environment. Let our collection of  
potted succulents bring some life into your  
space, and inspire you to grow and  
prosper no matter what life brings you.

# *Green Oases*

Abundance COLLECTION

GENEROSITY

PROSPERITY

AMBITION

FLOURISH

THRIVE



# GENEROSITY

Bring some of the most beautiful wild gardens into your home with Generosity. Our inspired collection of ceramic pieces will fill your home with splashes of colour, joy, and abundance. They'll make the perfect addition to any area and bring a sense of nature into your workspace. Make a statement and bring summer inside with Generosity!



## Product Specifications

Generosity (S)

Pot Dimension - 16.5cm D X 15cm H

Pot Color - Black / White

Generosity (M)

Pot Dimension - 20cm D X 18cm H

Pot Color - Black / White

Generosity (L)

Pot Dimension - 24cm D X 21cm H

Pot Color - Black / White



# PROSPERITY

Enjoy a touch of nature in your office with Prosperity. Our terrarium is like a little garden in a box, creating a magical and tranquil atmosphere in any space. With its lush foliage and sky-reaching trees, it's sure to give you the feeling of being in the middle of a lush field. Get your own piece of paradise with Prosperity!



## Product Specifications

### Prosperity (S)

Pot Dimension - 16.5cm D X 15cm H

Pot Color - Black / White

### Prosperity (M)

Pot Dimension - 20cm D X 18cm H

Pot Color - Black / White

### Prosperity (L)

Pot Dimension - 24cm D X 21cm H

Pot Color - Black / White



# FLOURISH

Bring the beauty of the desert inside your home with our Flourish terrarium. It is a modern take on the classic desert garden; it's self-sustaining and blooms with minimal care so you can enjoy its vibrant beauty without the hassle. With its unique design and materials, our terrarium is perfect for any living space.



## Product Specifications

Flourish (S)

Pot Dimension - 16.5cm D X 15cm H

Pot Color - Black / White

Flourish (M)

Pot Dimension - 20cm D X 18cm H

Pot Color - Black / White

Flourish (L)

Pot Dimension - 24cm D X 21cm H

Pot Color - Black / White



# AMBITION

Our Ambition range is perfect for bringing the outdoors in and creating an atmosphere of tranquillity. Whether you're looking for a modern centerpiece, a zen corner, or just some greenery to brighten up your space, our terrariums were inspired by the fields of green with trees reaching upwards to the sky so you can enjoy a beautiful piece of nature indoors. Get your hands on one today and start enjoying the lushness of nature right at your workspace.



## Product Specifications

---

### Ambition (S)

Pot Dimension - 16.5cm D X 15cm H

Pot Color - Black / White

### Ambition (M)

Pot Dimension - 20cm D X 18cm H

Pot Color - Black / White

### Ambition (L)

Pot Dimension - 24cm D X 21cm H

Pot Color - Black / White



# THRIVE

Step into a world of tranquility, with Thrive. This self-sustaining terrarium is the perfect way to introduce a touch of nature into your office. With realistic detail and lush foliage, it's like having your own personal serene garden. Completely easy to maintain and care for, Thrive will bring life to your work space without the need for a green thumb!



## Product Specifications

### Thrive (S)

Pot Dimension - 16.5cm D X 15cm H

Pot Color - Black / White

### Thrive (M)

Pot Dimension - 20cm D X 18cm H

Pot Color - Black / White

### Thrive (L)

Pot Dimension - 24cm D X 21cm H

Pot Color - Black / White



# *Green Bases*

GET IN TOUCH WITH US

[www.princelandscape.com/corporate-plant-rental/](http://www.princelandscape.com/corporate-plant-rental/)

Facebook



Instagram



LinkedIn

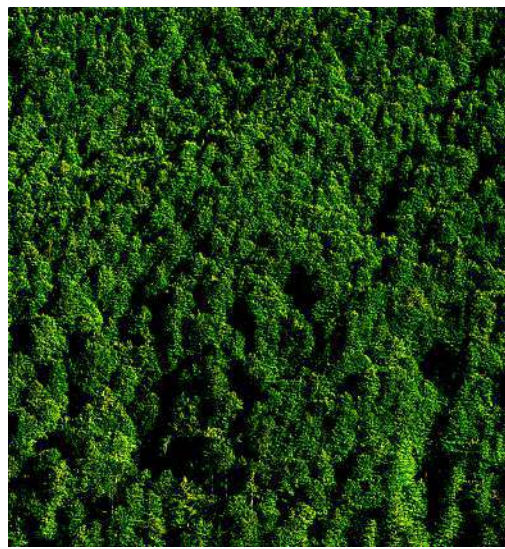






*features*  
BY PRINCE'S LANDSCAPE

# *Green Oases*








## *The Story*

Nature has always been humankind's source of rest, inspiration, and relief. But our modern lives have trapped us into tiny boxes. Our days have turned into endless pursuits of ambition, and filled with pressure. Nowadays, to be able to step away from our thoughts and responsibilities has become a luxury. Our mini naturescapes are meant to be pocket oases in our tiny concrete spaces. Our arrangements are inspired by familiar sights and scenes from nature which we've recreated through preserved moss and flowers, rocks, or succulents. They are meant to provide a much needed escape by bringing a small piece of nature back into their homes and offices.



An aerial photograph of a lush green moss-covered surface. A path of small white flowers winds through the moss. A large, crumpled blue fabric object, resembling a flower or a piece of art, is positioned on the left side of the frame.

This collection is inspired by abstract aerial photography of rolling hills, lush forests, and riverside bends. These framed arrangements are meant to be both familiar and memorable, as they bring a touch of nature to their everyday spaces.

# *Green Oases*

## Way Up High COLLECTION

GREENFIELDS

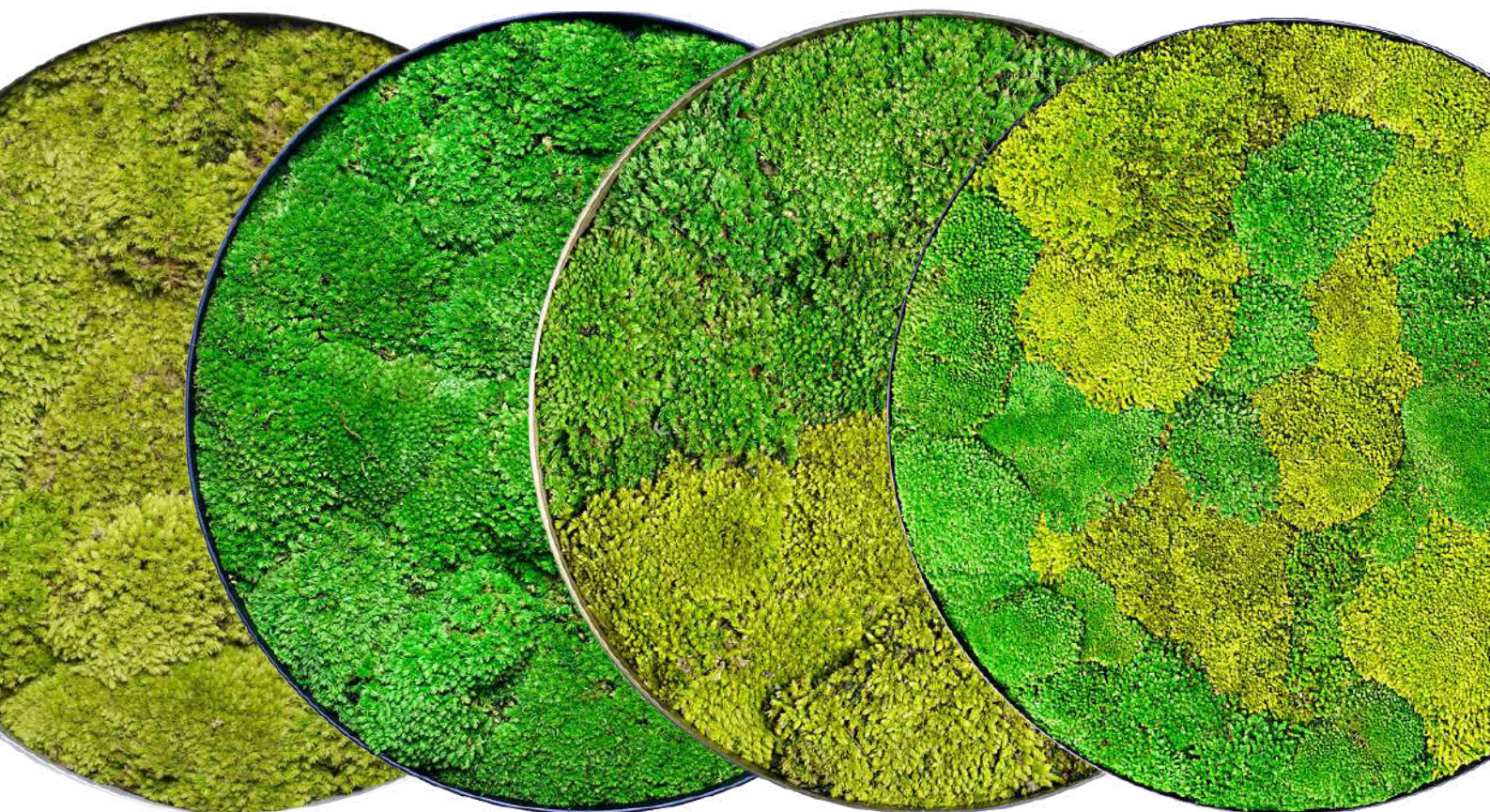
GREENWOOD GROVES

COASTLINES

HILLSIDE BLOOMS



# GREENFIELDS



Greenfields 1

Greenfields 2

Greenfields 3

Greenfields 4

Step into a world of natural beauty with our latest collection, inspired by lush forests and grassy knolls on rolling hills. Immerse yourself in the rich greens and soothing textures that capture the essence of nature's wonders. From the tranquil forests to the picturesque hills, our design brings the serenity of the outdoors to life in every piece. Discover the magic of nature with our exquisite collection.



## Dimensions (Diameter)

30cm / 40cm / 50cm / 60cm

## Available Colours



Silver

Gold

Rose Gold

Black





# GREENWOOD GROVES



Greenwood Groves 1



Greenwood Groves 2

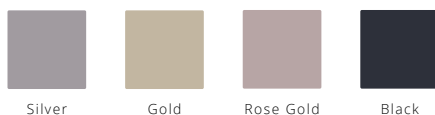
Elevate your decor and bring the outdoors inside with Greenwood Groves design. Whether you're decorating your home or office, the natural green hues of the moss bring to mind the endless fields and glades of greens that stretch out beneath the sky, providing a calming and serene atmosphere in any setting.



## Dimensions (Diameter)

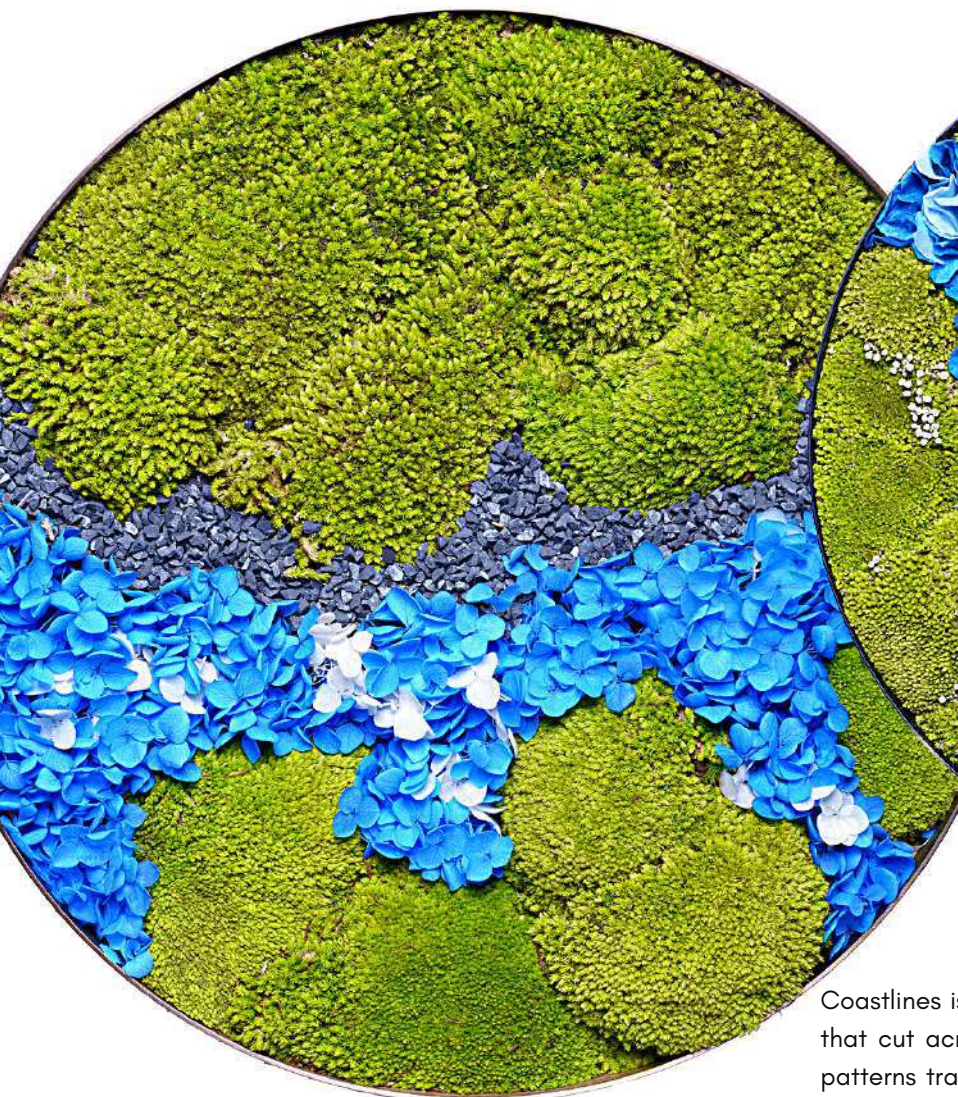
30cm / 40cm / 50cm / 60cm

## Available Colours

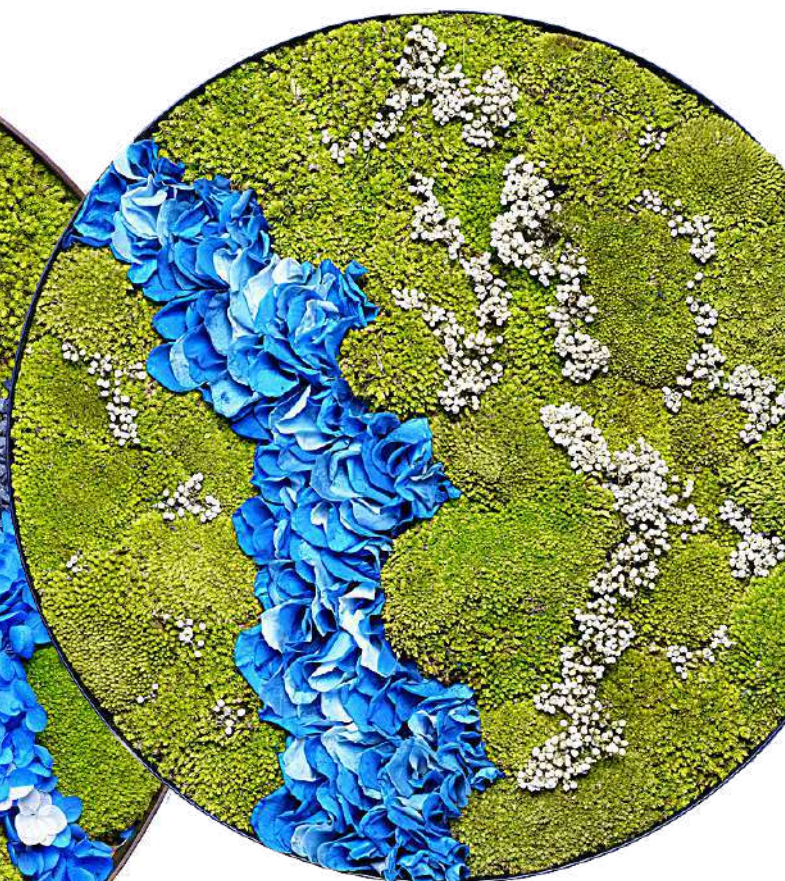




# COASTLINES



Coastlines 1



Coastlines 2

Coastlines is inspired by the ebb and flow of ultramarine rivers that cut across emerald fields. Let the vivid hues and flowing patterns transport you to a world of tranquility, where nature's majesty comes to life in every stitch and design. Indulge in this unique blend of colors and textures, and let your senses be swept away by the rhythmic dance of blues and greens.



## Dimensions (Diameter)

30cm / 40cm / 50cm / 60cm

## Available Colours



Silver

Gold

Rose Gold

Black





# HILLSIDE BLOOM



Hillside Bloom 1



Hillside Bloom 2

Evoked the captivating beauty of hillside floral blooms with our enchanting collection, inspired by nature's wonder. The design reflects the untamed elegance, vibrant colors, and delicate petals of wildflowers. Embrace the charm of nature's canvas with Hillside Bloom and let your style bloom with the splendor of floral wonders.



## Dimensions (Diameter)

30cm / 40cm / 50cm / 60cm

## Available Colours



Silver


Gold

Rose Gold

Black







Imagine wandering inside a lush garden as the light pierces through the tops of the tall trees. These frame arrangements lure you into a secret hideaway that lets you forget your worries, even for a little moment.

*Green Oases*  
Secret Garden COLLECTION

TANGLED THICKETS

VERDANT WOODS



# TANGLED THICKETS



Tangled Thickets 1



Tangled Thickets 2

Enter a world of lushness and splendor as you step into a thriving jungle teeming with life. The vibrant greens and verdant ferns create a captivating tapestry of nature's wonders, enveloping you in a sense of awe and amazement. Lose yourself in the tangled foliage, and let the beauty of the jungle captivate your senses with its abundance and richness.



## Dimensions (Diameter)

30cm / 40cm / 50cm / 60cm

## Available Colours



Silver

Gold

Rose Gold

Black





# VERDANT WOODS



Verdant Woods 1



Verdant Woods 2

This design is inspired by the tranquility of a forest, with trees that surround and protect you. Our team has carefully curated an environment that emulates the serenity of nature, creating a space that fosters creativity and productivity. Just like how the trees in a forest provide shelter and support, our design ensures a conducive environment for you to thrive.



## Dimensions (Diameter)

30cm / 40cm / 50cm / 60cm

## Available Colours

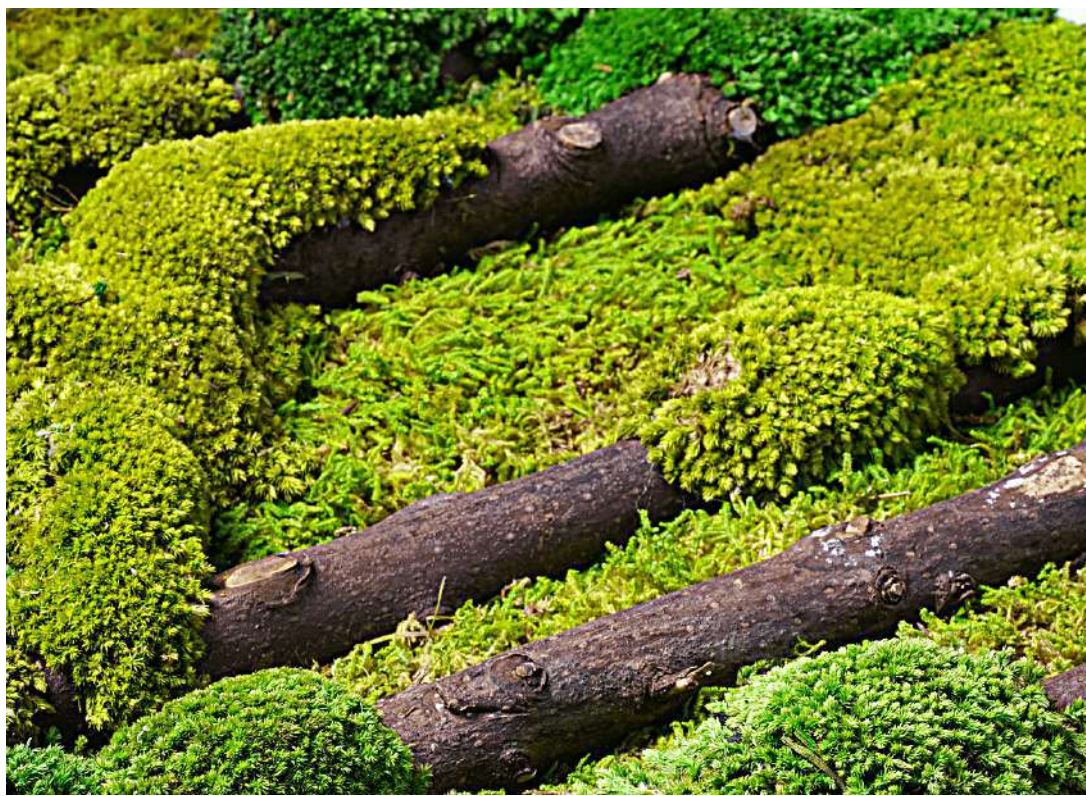


Silver

Gold

Rose Gold

Black







# *Green Oases*

GET IN TOUCH WITH US

[www.princelandscape.com/corporate-plant-rental/](http://www.princelandscape.com/corporate-plant-rental/)

Facebook



Instagram



LinkedIn



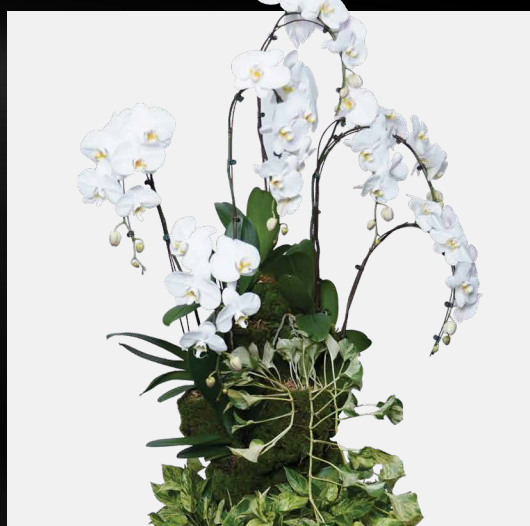


*features*  
BY PRINCE'S LANDSCAPE

# PHALAENOPSIS ORCHID TOWER







## Phalaenopsis Orchids Tower

**Available in**



- 4ft - 5ft
- 5ft - 6ft
- 6ft - 7ft





## GET IN TOUCH WITH US

[www.princelandscape.com/corporate-plant-rental/](http://www.princelandscape.com/corporate-plant-rental/)

Facebook



Instagram



LinkedIn



*features*  
BY PRINCE'S LANDSCAPE

 **Prince's** ® SINCE 1995  
LANDSCAPE PTE LTD





# THE MIVARA COLLECTION

FRESH FLOWER ARRANGEMENT

*features*  
BY PRINCE'S LANDSCAPE



# ABOUT THE COLLECTION

Vivara, derived from "**viva,**" meaning "**alive,**" embodies **vitality and energy.** This collection celebrates floral beauty and nature's most captivating blooms, with three themes: **Petal Gradient, Modern Elegance, and Floral Euphoria.**

Each arrangement blends sophistication and vibrancy, enhancing modern interiors or **bringing a fresh spirit to traditional spaces.** From minimalist designs to lush bouquets, the **Vivara Collection transforms ordinary rooms into extraordinary experiences.**







# CONCEPTS

- PETAL GRADIENT
- MODERN ELEGANCE
- FLORAL EUPHORIA



# PETAL GRADIENT CONCEPT

Let striking floral arrangements enhance  
your space, blending cheerful colours and  
artistic flair for a refreshing ambiance.



# AVAILABLE IN 4 SIZES



PETITE



CLASSIC



GRANDEUR



IMPERIUM

















*features*  
BY PRINCE'S LANDSCAPE



\* Images are for illustration purposes only.









\* Images are for illustration purposes only.













*features*  
BY PRINCE'S LANDSCAPE

*\* Images are for illustration purposes only.*







# MODERN ELEGANCE CONCEPT



Clean lines and modern aesthetics meet  
in these floral designs, creating a chic,  
contemporary vibe.



# AVAILABLE IN 4 SIZES



PETITE



CLASSIC



GRANDEUR



IMPERIUM









*features*  
BY PRINCE'S LANDSCAPE

\* Images are for illustration purposes only.





\* Images are for illustration purposes only.





















*features*  
BY PRINCE'S LANDSCAPE



\* Images are for illustration purposes only.





\* Images are for illustration purposes only.







# FLORAL EUPHORIA CONCEPT



Bright and playful, these floral compositions fill rooms with dynamic colours and an uplifting, cheerful atmosphere.



# AVAILABLE IN 4 SIZES



PETITE



CLASSIC



GRANDEUR



IMPERIUM

















*features*  
BY PRINCE'S LANDSCAPE



*\* Images are for illustration purposes only.*













*features*  
BY PRINCE'S LANDSCAPE



\* Images are for illustration purposes only.













*features*  
BY PRINCE'S LANDSCAPE

*\* Images are for illustration purposes only.*









# CONTACT US

✉ [buzz@prince.com.sg](mailto:buzz@prince.com.sg)

☎ [+65 6763 7000](tel:+6567637000)

🌐 [www.princelandscape.com](http://www.princelandscape.com)



