



FEATURES BY PRINCE'S LANDSCAPE

PLANTS for RENTAL

www.princelandscape.com

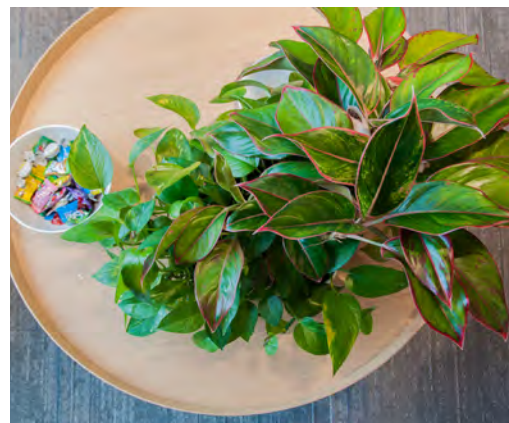


“As Changi embarks on development plants to meet the demands of growing traffic in the years to come, we endeavor to continue innovating and improving airport operations across all aspects. We look forward to another year of close partnership with you, where together, we will deliver a seamless and memorable experience for all who travel through Changi.

Thank you once again for your continued strong support. We could not have done it without you.”

**- Executive Vice President
Airport Management / Changi Airport Group**

features



ABOUT FEATURES

FEATURES offers a wide variety of hydroplants which appeals to anyone's choice.

Plants are set up in a self-monitoring system with a water indicator displaying the water level. Watering between intervals vary from 15-60 days. Plants are available for rental which suits any corporate office.

- I** INDOOR
- S** SEMI-SHADED
- O** OUTDOOR

To ensure selection of plants are in order, we have made recommendations on suitable species for indoor, outdoor, and semi-shaded areas.

For more information, please contact us.

R8239

Description

Suitable for indoor and semi-shaded plants; Polyethylene; Fabricated in Singapore; Available in Black, Ivory and Red

Dimensions

39cm (D) x 82cm (H)

Available Colours





Aglaonema 'diamond bay'

I

Overall Height
3' - 4'



Aglaonema 'silver queen'

I

Overall Height
3' - 4'



Chamaedorea seifrizii

I S

Overall Height
4' - 5'



Calathea makoyana

I S

Overall Height
3' - 4'



Dracaena fragrans

I S

Overall Height
5' - 6'



Dracaena surculosa

I O S

Overall Height
5' - 6'



Dracaena gymilis

I S

Overall Height
5' - 6'



Dypsis lutescens

I O S

Overall Height
5' - 6'



Epipremnum aureum

I

Overall Height
5' - 6'



Ficus lyrata

I S

Overall Height
5' - 6'



Ficus elastica

I O S

Overall Height
4' - 5'



Dracaena fragrans 'green'

I S

Overall Height
5' - 6'



I S

Licuala grandis

Overall Height
5' - 6'



I

Pachira

Overall Height
5' - 6'



I

Philodendron 'gold'

Overall Height
5' - 6'



I

Philodendron 'green heart'

Overall Height
5' - 6'



I

Philodendron 'congo red'

Overall Height
3' - 4'



I O S

Pleomele reflexa

Overall Height
4' - 5'



Rhapis excelsa

I O S

Overall Height
5' - 6'



Schefflera arboricola

I O S

Overall Height
4' - 5'



Rhapis multifida

I O S

Overall Height
5' - 6'



Spathiphyllum

I

Overall Height
3' - 4'



Sanseveria

I O S

Overall Height
3' - 4'



Zamioculcas

I

Overall Height
3' - 4'



I

Dendrobium

Overall Height
3' - 4'



I

Phalaenopsis

Overall Height
5' - 6'

INDOOR

I

OUTDOOR

O

SEMI-SHADED

S

To ensure selection of plants are in order, Prince's have made recommendations on suitable species for indoor, outdoor, and semi-shaded areas.

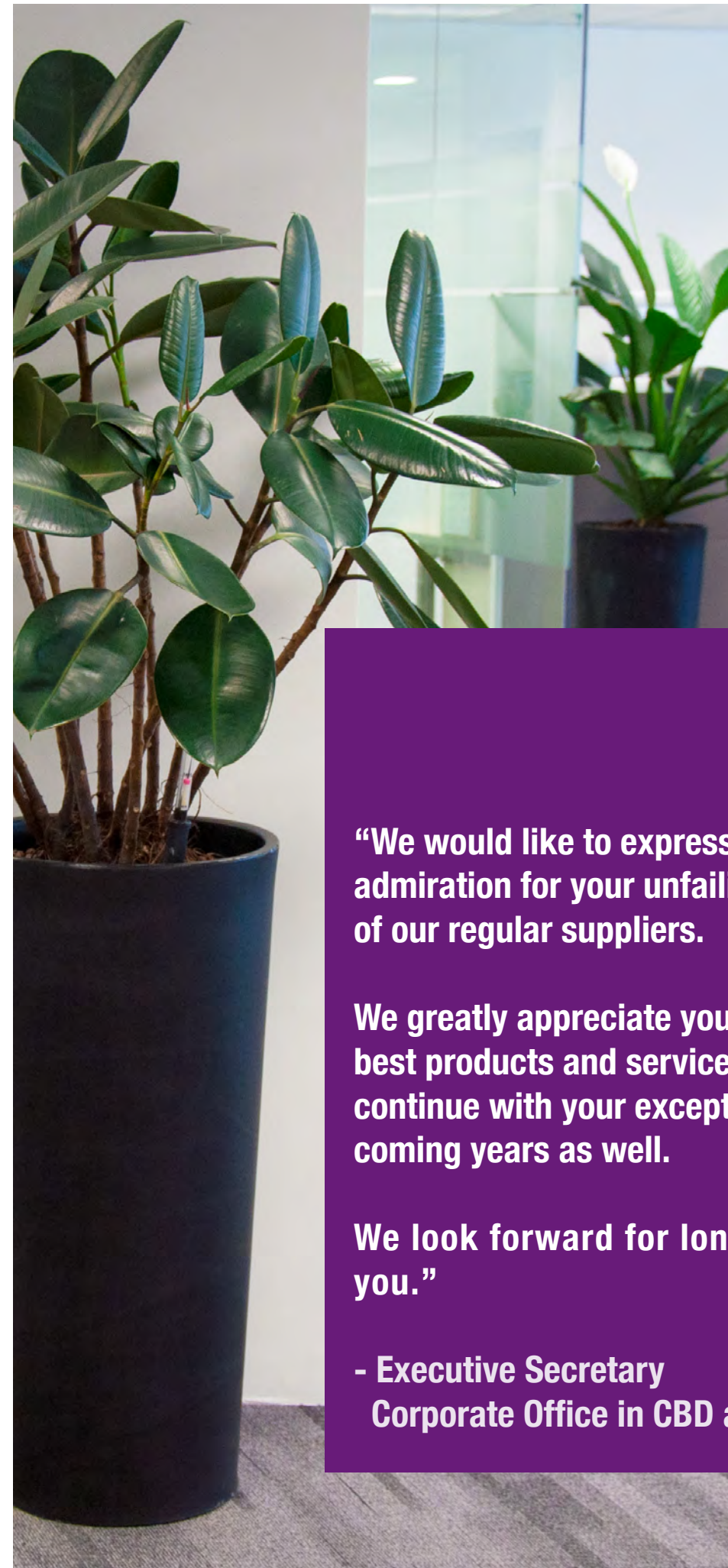
For more information, please contact us.



FEATURES BY PRINCE'S LANDSCAPE

PLANTERS CATALOGUE

www.princelandscape.com

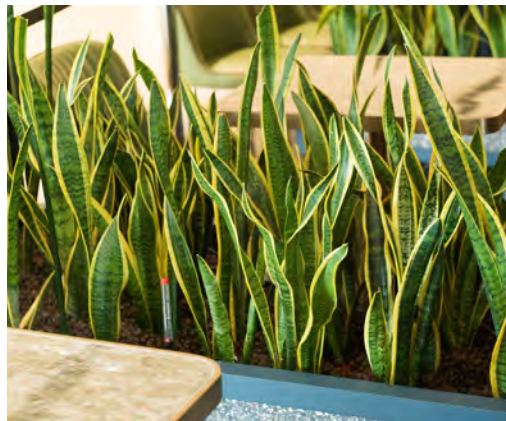


“We would like to express to you our warmest admiration for your unfailing service to us as one of our regular suppliers.

We greatly appreciate your efficiency in providing best products and service. We also hope you will continue with your exceptional service in the coming years as well.

We look forward for long association with you.”

**- Executive Secretary
Corporate Office in CBD area**



CORPORATE PROFILE

One of the oldest nurseries in Singapore, Prince's has 50 years experience in the industry. Started out humbly as a flower shop, Prince's has evolved into a full-fledge landscape design and installation specialist.

Presently blessed with 2 nurseries and a headcount of more than 400 professionals, horticulturists, designers, engineers, florists and support staff, Prince's success is attributable to this dedicated and qualified team which also undergoes a rigorous training and development program, allowing us to be uniquely customer- and product-oriented at the same time.

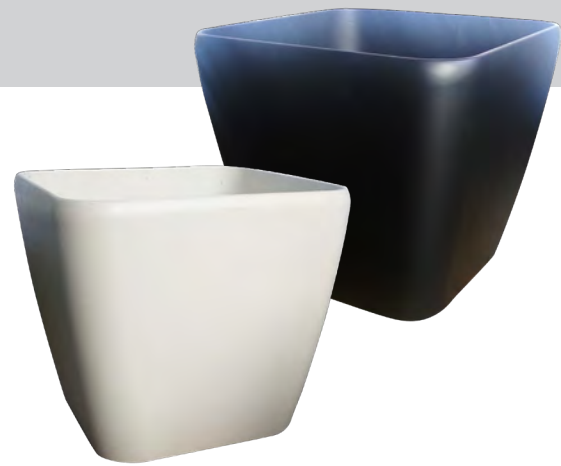
At the international front, our global connections ensure that Prince's meets the needs of our customers. Strategic alliances with Europe, Australasia and Asia have been a boon to our service-oriented culture.

With success comes responsibilities. Our company believes firmly in CSR and we are a conscious participant in environmental conservation as well as an active institution for the disabled, reformed and older workforce.



Redecorate your office spaces and make them a more comfortable place to work in. FEATURES by Prince's Landscape offers a wide variety of hydroplants which appeals to anyone's choice.

Plants are set up in a self-monitoring system with a water indicator displaying the water level. Watering between intervals vary from 15-60 days. Plants are also available for rent.



S3636

Description

Suitable for indoor plants; Fibre plastic; Imported

Dimensions

36cm (L) x 36cm (W) x 36cm (H)

Available Colours



R3637

Description

Suitable for indoor plants; Fibre plastic; Imported

Dimensions

37cm (D) x 36cm (H)

Available Colours



C7540

Description

Suitable for indoor plants; Polyethylene; Fabricated in Singapore

Dimensions

40cm (L) x 40cm (W) x 75cm (H)

Available Colours



REP Series

Description

Suitable for both indoor and outdoor plants; Polyethylene; Imported

Dimensions

REP 7130 710 mm x 300 mm x 300 mm

REP 7630 760 mm x 300 mm x 300 mm

REP 9135 910 mm x 350 mm x 350 mm

Available Colours



RG5733

Description

Suitable for indoor plants; Fibre plastic; Imported

Dimensions

33cm (D) x 57cm (H)

Available Colours



REP 7860

Description

Suitable for indoor plants; Fibre plastic; Imported

Dimensions

78cm (L) x 40cm (W) x 60cm (H)

Available Colours





R8239

Description

Suitable for indoor plants;
Polyethylene; Fabricated in Singapore

Dimensions

39cm (D) x 82cm (H)

Available Colours



TAU Series



Taperus 1050

Description

Matte Textured Plant Pot

Dimensions

500 mm(L) x 500 mm(W) x 500 mm(H)

Available Colours



Symmetria 1270

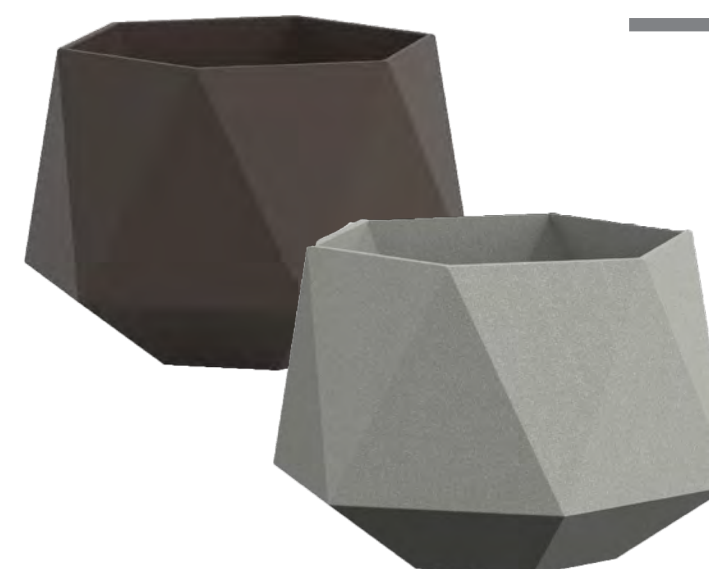
Description

Matte Finish Plant Pot

Dimensions

600 mm(L) x 520 mm(W) x 400 mm(H)

Available Colours





Turrim 4310

Description
Matte Metallic Plant Pot

Dimensions
550 mm(L) x 550 mm(W) x 1100 mm(H)

Available Colours



Turrim 4300

Description
Matte Finish Plant Pot

Dimensions
420 mm(L) x 420 mm(W) x 800 mm(H)

Available Colours

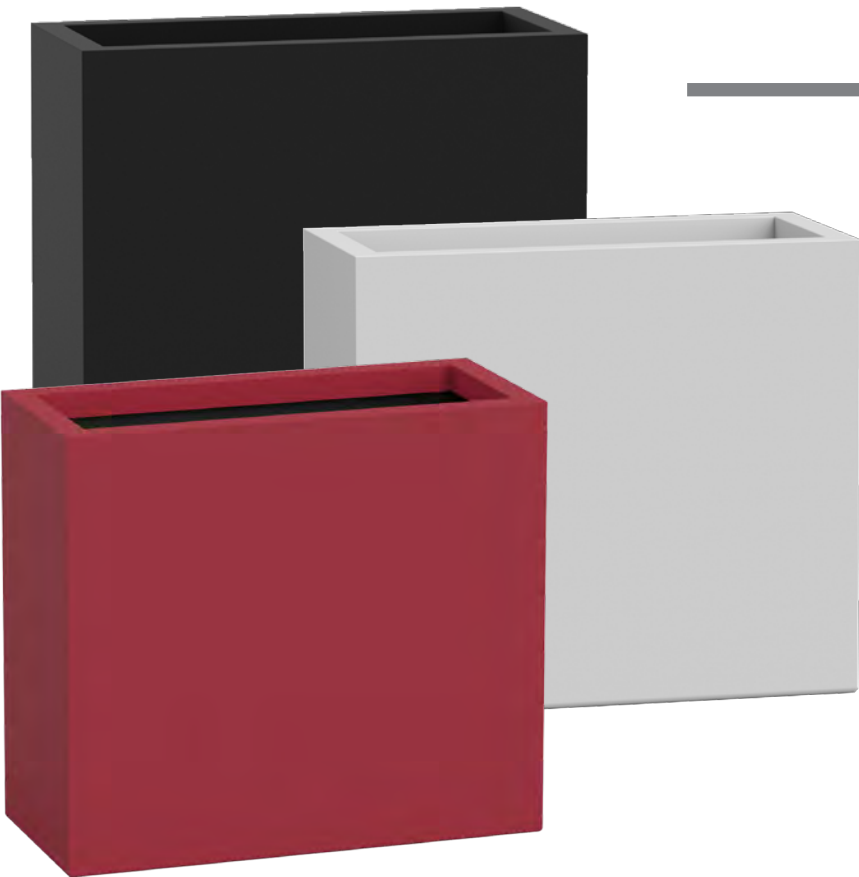


Mesa 6230

Description
Matte Rectangular Plant Pot

Dimensions
660 mm(L) x 180 mm(W) x 180 mm(H)

Available Colours



Dividum 8990

Description
Matte Finish Plant Pot

Dimensions
910 mm(L) x 410 mm(W) x 810 mm(H)

Available Colours





Taperus 9535

Description
Matte Textured Plant Pot

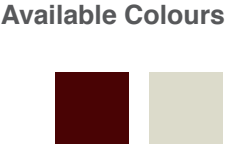
Dimensions
400 mm(L) x 400 mm(W) x 750 mm(H)



Striata 5600

Description
Matte Mettalic Plant Pot

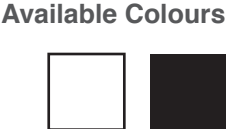
Dimensions
660 mm(L) x 660 mm(W) x 800 mm(H)



Taperus 9525

Description
Matte Textured Plant Pot

Dimensions
300 mm(L) x 300 mm(W) x 560 mm(H)





Rotunda 5205

Description

Round metallic planter with a tapered base

Dimensions

680 mm(L) x 680 mm(W) x 790 mm(H)

Available Colours



Merlot 5840

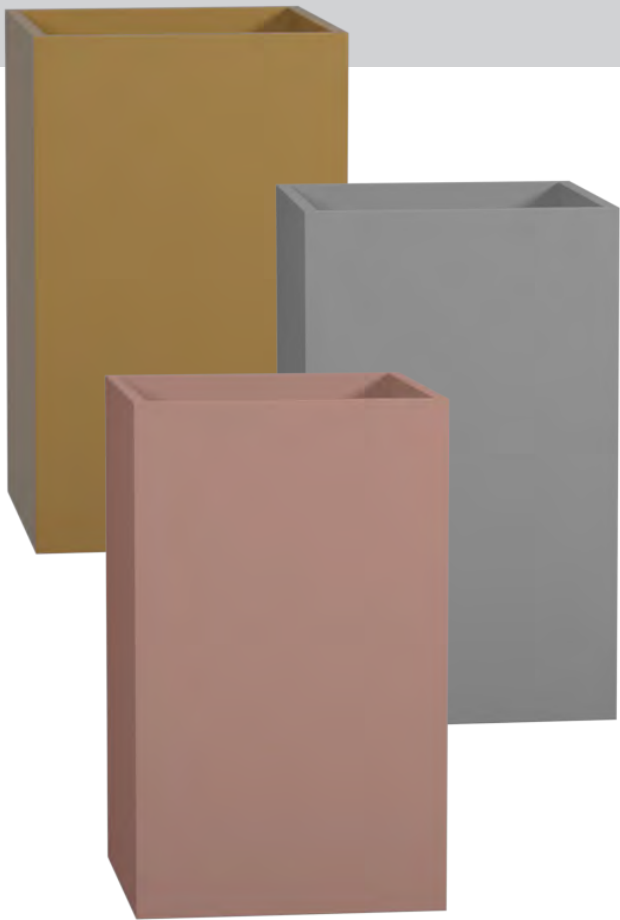
Description

Round metallic planter

Dimensions

560 mm(L) x 560 mm(W) x 665 mm(H)

Available Colours



Quadrum 8310

Description

Tall square metallic planter box with built in fiberglass reinforcements on the side walls and bottom

Dimensions

580 mm(L) x 580 mm(W) x 940 mm(H)

Available Colours



Features Nordic Planter Series



Description

Nordic Planter with Stand

Pot Dimensions

- 200mm(D) x 170 mm(H)
- 230mm(D) x 200mm(H)
- 250mm(D) x 200mm(H)

Stand Height

470mm | 700mm | 900mm

Available Colours



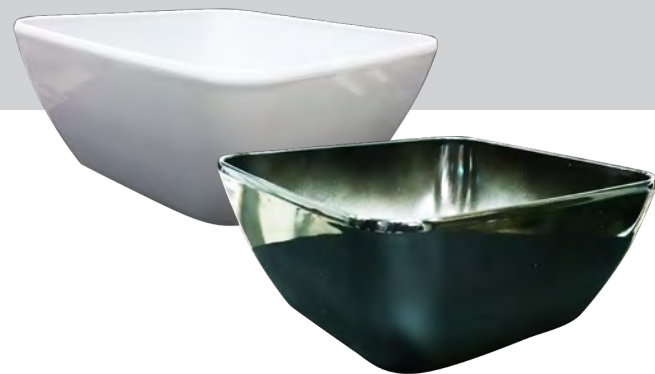
Re-spraying of pots available upon request.

Re-spraying of pots available upon request.

Tabletop Planters

All tabletop planters are:

- Suitable for indoor plants
- Fibre plastic
- Imported



TS1021

Dimensions

21cm (L) x 21cm (W) x 10cm (H)

Available Colours



TS1313

Dimensions

13cm (L) x 13cm (W) x 13.5cm (H)

Available Colours



TO1122

Dimensions

22cm (D) x 11.2cm (H)

Available Colours



TS1815

Dimensions

15cm (L) x 15cm (W) x 18.5cm (H)

Available Colours



TR1315

Dimensions

15cm (D) x 12.7cm (H)

Available Colours



TR1613

Dimensions

13cm (D) x 15.5cm (H)

Available Colours



TS1315

Dimensions

15cm (L) x 15cm (W) x 13cm (H)

Available Colours



TS1910

Dimensions

9.8cm (L) x 9.8cm (W) x 18.5cm (H)

Available Colours





FEATURES BY PRINCE'S LANDSCAPE

TABLETOP PLANTS CATALOGUE

www.princelandscape.com



Anthurium & Money Plant Tabletop Plant

Description

Suitable for indoor; Available in Black and White Planter

Dimensions of Planter

21cm (L) x 21cm (W) x 10cm (H)



Philodendron gold Tabletop Plant

Description

Suitable for indoor; Available in Black, White, and Red Planter

Dimensions of Planter

15cm (D) x 15.5cm (H)



Aglaonema 'silver queen' Tabletop Plant

Description

Suitable for indoor; Available in Black, White, and Red Planter

Dimensions of Planter

15cm (D) x 15.5cm (H)



Peperomia variegated Tabletop Plant

Description

Suitable for indoor; Available in Black, White, and Red Planter

Dimensions of Planter

15cm (D) x 15.5cm (H)



Calathea makoyana, Fern, Sanseveria dwarf & Fittonia red Tabletop Plant

Description

Suitable for indoor; Available in Black and White Planter

Dimensions of Planter

21cm (L) x 21cm (W) x 10cm (H)



Sanseveria dwarf Tabletop Plant

Description

Suitable for indoor; Available in Black, White, and Red Planter

Dimensions of Planter

22cm (D) x 11.2cm (H)



Epipremnum aureum Tabletop Plant

Description

Suitable for indoor; Available in Black, White, and Red Planter

Dimensions of Planter

22cm (D) x 11.2cm (H)



Aglaonema red Tabletop Plant

Description

Suitable for indoor; Available in Black, White, and Red Planter

Dimensions of Planter

22cm (D) x 11.2cm (H)



FEATURES BY PRINCE'S LANDSCAPE

LIVEPICTURE CATALOGUE

www.princelandscape.com



CORPORATE PROFILE

One of the oldest nurseries in Singapore, Prince's has 50 years experience in the industry. Started out humbly as a flower shop, Prince's has evolved into a full-fledge landscape design and installation specialist.

Presently blessed with 2 nurseries and a headcount of more than 400 professionals, horticulturists, designers, engineers, florists and support staff, Prince's success is attributable to this dedicated and qualified team which also undergoes a rigorous training and development program, allowing us to be uniquely customer- and product-oriented at the same time.

At the international front, our global connections ensure that Prince's meets the needs of our customers. Strategic alliances with Europe, Australasia and Asia have been a boon to our service-oriented culture.

With success comes responsibilities. Our company believes firmly in CSR and we are a conscious participant in environmental conservation as well as an active institution for the disabled, reformed and older workforce.





LivePicture, an ingenious product of a Europe-based company, Mobilane, is finally distributed to Singapore by Prince's.

LivePicture, living picture made of plants, embodies innovation, design and landscaping to deliver stunning effects. The frame includes an integrated watering system with reservoir to ensure that the plants are provided with water for four to six weeks. The innovative patented construction requires no electric power.

LivePicture can be easily and quickly mounted on any brick or reinforced concrete wall using just a few screws.

All pictures and information related to LivePicture products are provided by Mobilane.



Plants make an important contribution to the indoor climate, through their production of oxygen, purification of the air and positive effect on relative humidity. Scientific research has shown that anyone who spends more than four hours per day in a room with plants will find it more comfortable and will be demonstrably more productive.

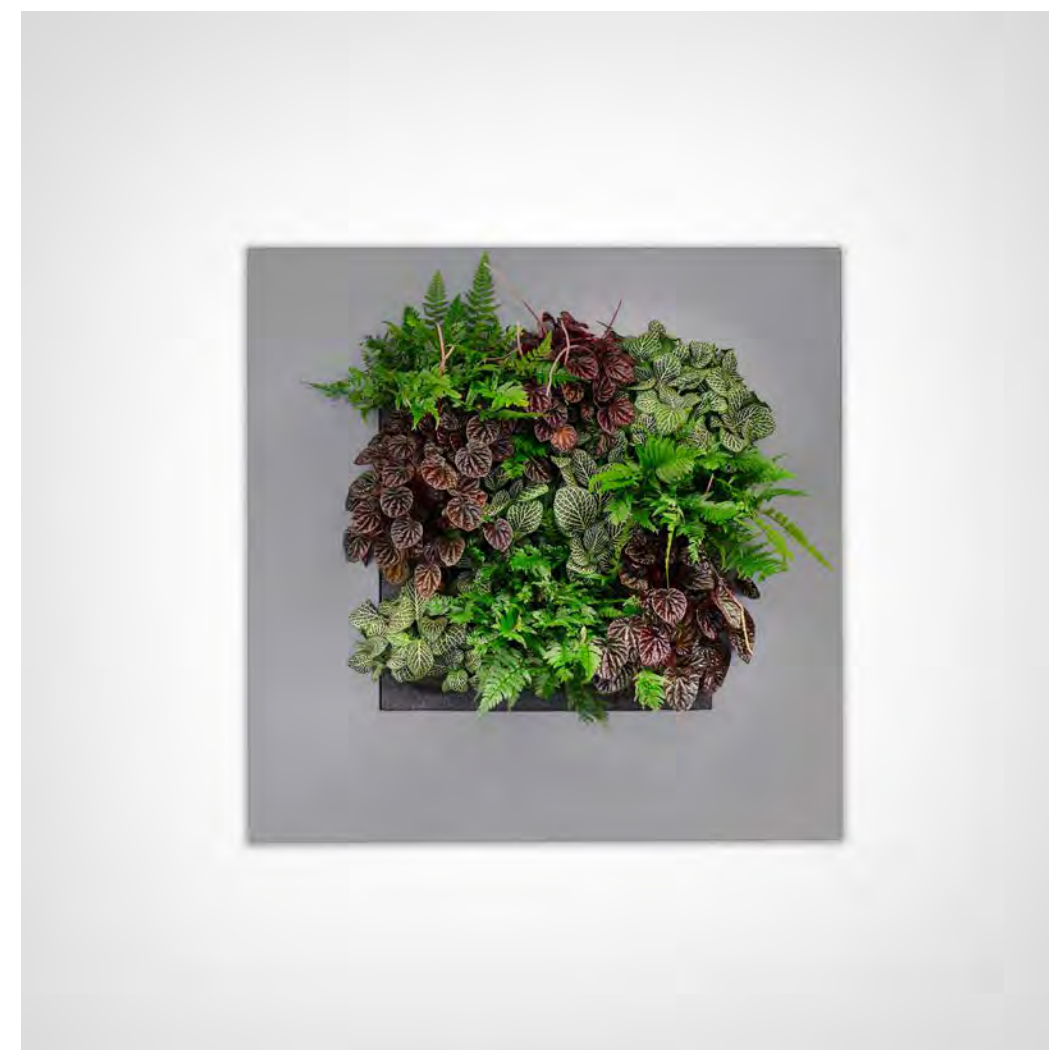
LivePicture is a stylish and space-saving solution to the use of plants in any interior environment. Rooms with limited space for plant pots will benefit from wall-mounted placement of LivePicture.

LivePicture requires minimal maintenance. It uses a system of plant cassettes that are easily exchangeable. Plants can be changed with ease, for instance to reflect the season or for special occasions such as Christmas or Chinese New Year.



BENEFITS

- Exchangeable cassettes
- Water supply for 4 to 6 weeks
- Integrated watering system
- No electricity or pump required
- Quick and easy installation
- Smart and silent full and empty indicators
- Can be personalised
- Exchangeable frame
- Modern design
- Improves the room's acoustics
- Contributes to a healthy indoor climate through oxygen production and fine-dust capture



LivePicture 1

Size (W x H x D) 72cm x 72cm x 7cm

Number of Cassettes 1

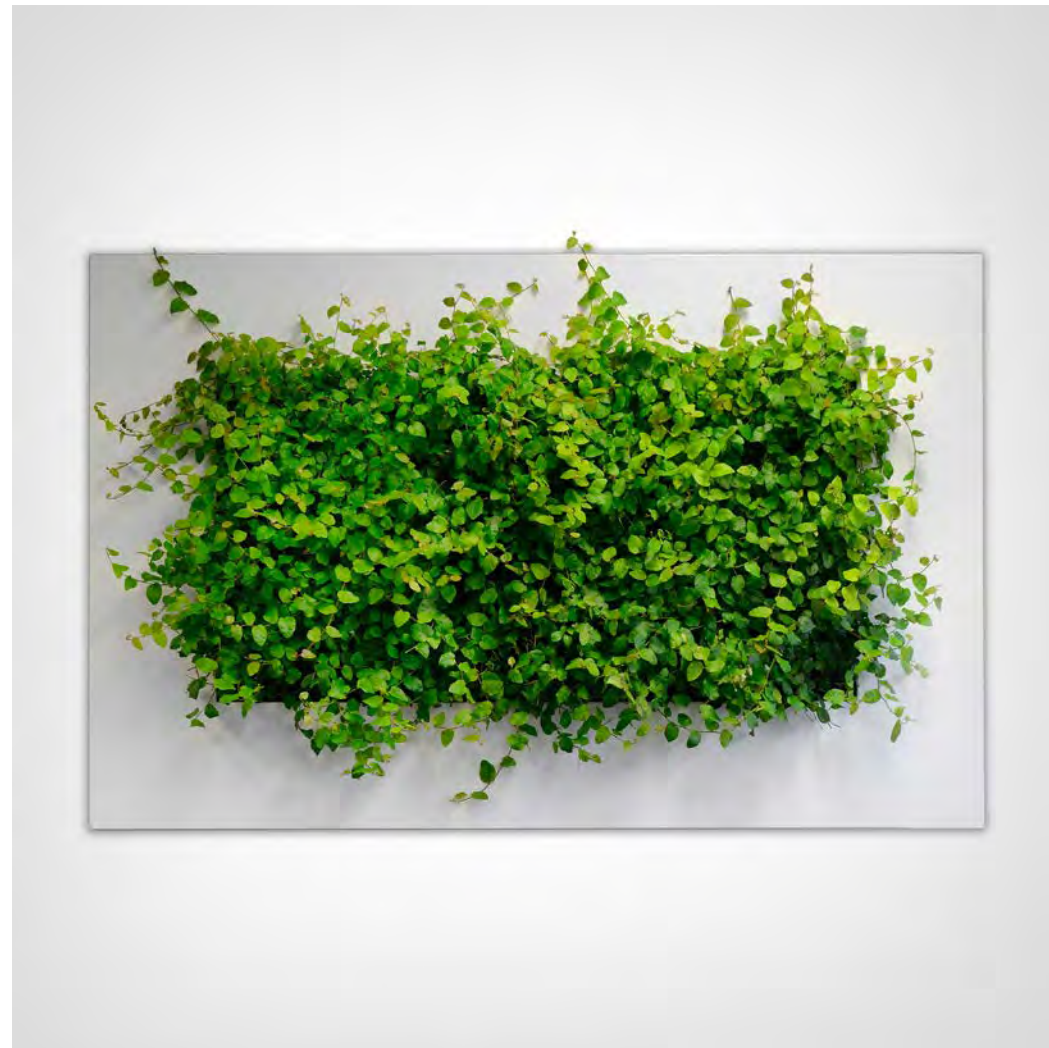
Weight (empty) 12.0 kg

Volume (litre) 14 ltr

Available Colours



Silver Grey Anthracite



LivePicture 2

Size (W x H x D) 112cm x 72cm x 7cm

Number of Cassettes 2

Weight (empty) 16.6 kg

Volume (litre) 19 ltr

Available Colours



Silver Grey Anthracite

All pictures and information related to LivePicture products are provided by Mobilane.



LIVEPICTURE GO

EASY GREEN

Add vertical green innovation to your living, learning or work environment with the impressive LivePicture GO. Its simplicity means you don't even need green fingers to enjoy the beauty of plants. LivePicture GO has its own indicator that will let you know when the water tank needs filling. It has enough water storage capacity to supply sufficient water for 2 - 4 weeks. LivePicture GO has a capillary feature within the plant cassette ensuring the plants are supplied with the correct amount of water without you needing to think about it.

FUN GREEN

Enjoy the freedom and creativity of LivePicture GO. You can create your own designs or even a wall collage by installing multiple LivePicture GO's. LivePicture GO's versatility means it can be used both indoor and outdoor, as single or multiple units. Its plant cassette are easily removable and you can fill the pockets with plants that match your own taste, allowing you complete flexibility to suit your own preferences or change them whenever you choose. Mounting your living plant picture is easy too, the two screws and installation guide we provide. Choosing LivePicture GO will give you all the advantages of bringing a green environment into your space; it makes people happier, it creates a healthier indoor climate, improves air quality and of course it's beautiful too!

LIVEPICTURE GO



LivePicture GO

Size (W x H x D) 51.6 x 51.6 x 11.2cm

Weight (empty) 2.7 kg excluding water & plants | +/-5kg including water & plants

Available Colours



Black



White



Grey



Red



LivePicture GO - Bamboo Series



Bamboo Natural



Bamboo Black



THE GLASS GARDEN

BY PRINCE'S LANDSCAPE



FEATURES BY PRINCE'S LANDSCAPE

TERRARIUM CATALOGUE

www.princelandscape.com

A terrarium is a glass container with soil and plants, creating miniature landscapes. Choose from these arrangements and add some green into your office spaces.



Fishbowl Terrarium (XS)

Description

Suitable for indoor; The plant breed and materials are subjected to availability. If out of stock, we will replace with the next suitable substitute and designs remain similar.

Diameter

Approximately 15cm

Plants

3 Assorted succulents



Fishbowl Terrarium (S)

Description

Suitable for indoor; The plant breed and materials are subjected to availability. If out of stock, we will replace with the next suitable substitute and designs remain similar.

Diameter

Approximately 20cm - 22cm

Plants

5-6 Assorted succulents



Square Geometrical Terrarium

Description

Suitable for indoor; The plant breed and materials are subjected to availability. If out of stock, we will replace with the next suitable substitute and designs remain similar.

Side Length

Approximately 15cm

Plants

3-4 Assorted succulents



Fishbowl Terrarium (M)

Description

Suitable for indoor; The plant breed and materials are subjected to availability. If out of stock, we will replace with the next suitable substitute and designs remain similar.

Diameter

Approximately 25cm - 30cm

Plants

6-8 Assorted succulents

Wide Cylindrical (M)

Description

Suitable for indoor; The plant breed and materials are subjected to availability. If out of stock, we will replace with the next suitable substitute and designs remain similar.

Dimensions

29 cm D x 9.5 cm H

Plants

4-5 Assorted succulents



Fishbowl Terrarium (S)

Description

Suitable for indoor; The plant breed and materials are subjected to availability. If out of stock, we will replace with the next suitable substitute and designs remain similar.

Dimensions

19 cm D x 14.5 cm H

Plants

4-5 Assorted succulents



Heart (M)

Description

Suitable for indoor; The plant breed and materials are subjected to availability. If out of stock, we will replace with the next suitable substitute and designs remain similar.

Dimensions

24 cm L x 17 cm W x 9 cm H

Plants

4-5 Assorted succulents



Angled Bowl (XS)

Description

Suitable for indoor; The plant breed and materials are subjected to availability. If out of stock, we will replace with the next suitable substitute and designs remain similar.

Dimensions

12.5 cm D x 11.5 cm H

Plants

2-3 Assorted succulents





Cuboid (S)

Description

Suitable for indoor; The plant breed and materials are subjected to availability. If out of stock, we will replace with the next suitable substitute and designs remain similar.

Dimensions

15 cm L x 15 cm W x 15 cm H

Plants

3-4 Assorted succulents



Cuboid (MINI)

Description

Suitable for indoor; The plant breed and materials are subjected to availability. If out of stock, we will replace with the next suitable substitute and designs remain similar.

Dimensions

7.5 cm L x 7.5 cm W x 7.5 cm H

Plants

1 succulent



Cuboid (XS)

Description

Suitable for indoor; The plant breed and materials are subjected to availability. If out of stock, we will replace with the next suitable substitute and designs remain similar.

Dimensions

10 cm L x 10 cm W x 10 cm H

Plants

2 Assorted succulents



Fish Bowl (XS)

Description

Suitable for indoor; The plant breed and materials are subjected to availability. If out of stock, we will replace with the next suitable substitute and designs remain similar.

Dimensions

11cm D x 9cm H

Plants

2 Assorted succulents



FEATURES BY PRINCE'S LANDSCAPE
MOSS FRAME CATALOGUE

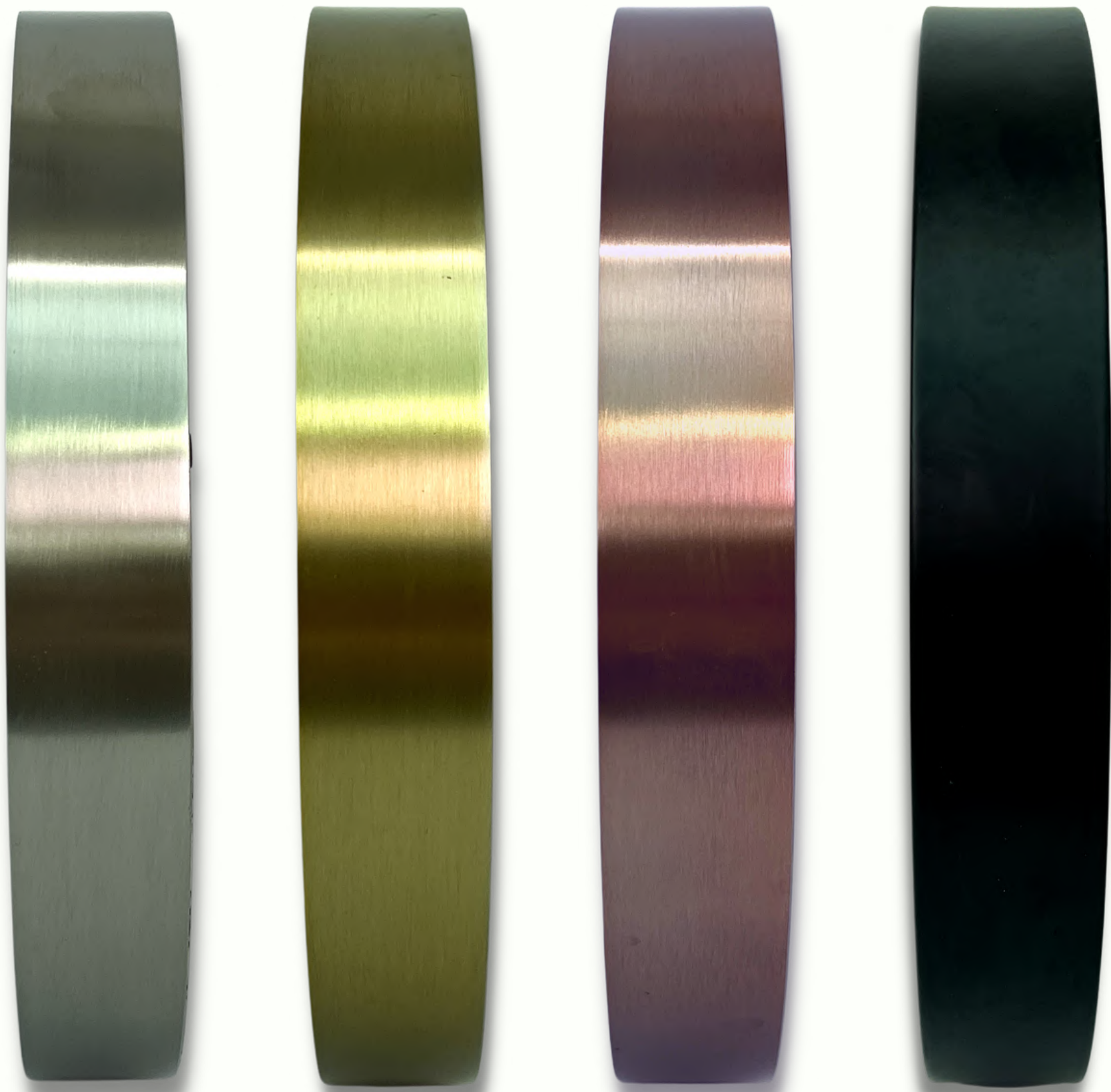
www.princelandscape.com

MOSS FRAME



Scientifically proven to absorb sound, reduce psychological stress, and improves mental health for better productivity.

THE SELECTION



Premium Stainless Steel

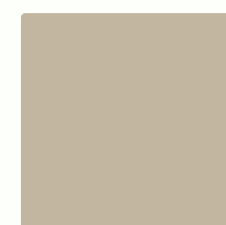
Dimensions (Diameter)

30cm / 40cm / 50cm / 60cm

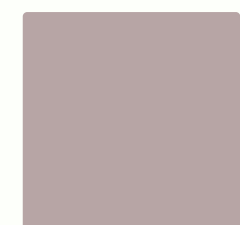
Available Colours



Silver



Gold



Rose Gold



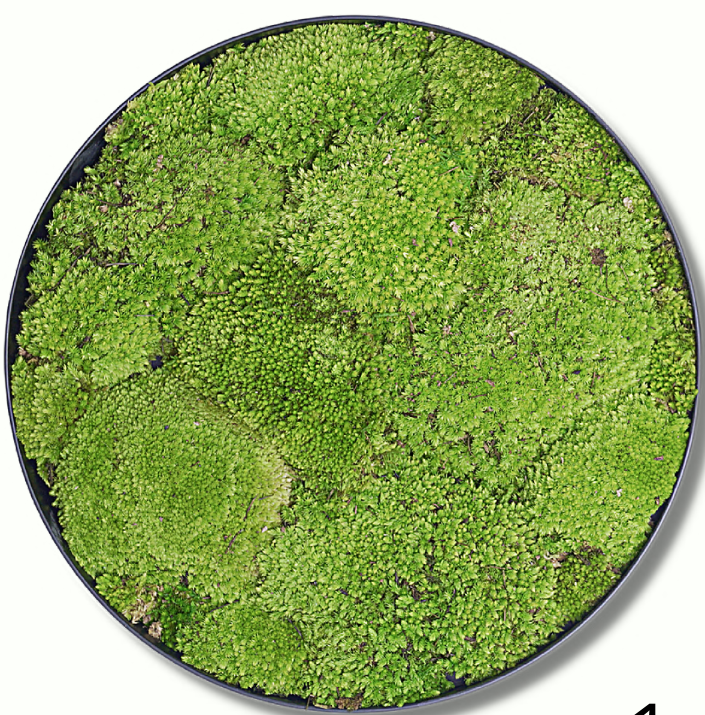
Black

Four Moss Designs

Dimensions (Diameter)

30cm / 40cm / 50cm / 60cm

Available Designs



1



2



3



4

