

DID YOU KNOW?

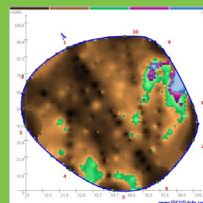
Under the Parks and Trees Act of Singapore, healthy trees with girths of more than one metre are protected as long as they provide lush greenery and improve the ambience of the TCAs (Tree Conservation Areas). If a tree owner proceeds to fell or remove a protected tree without attaining approval from NParks, the owner is liable to pay a fine not exceeding \$50,000.



**CENTRAL & CHANGI
TREE CONSERVATION AREAS**



At Prince's, we have developed a team of professionals who are specially trained to look into the assessment and treatment of trees. Very often, trees are left in neglect with the assumption that it is completely self-sustaining and safe. But like every living creature, trees do have their vulnerabilities and these can have a hazardous effect on its surrounding environments.



Common ailments like Tree Crown Damage, Tree Trunk Damage, Tree Root System Damage, have often been the root causes of issues pertaining to tree health deterioration. Our specialised team of consultants which consists of experienced Certified Arborists will be able to best assess and forecast the necessary steps needed to protect the tree and prevent damage to the environment which it lives in.

Our experts have also been called upon to advise and execute strategies pertaining to the preservation and transplantation of trees. With the recent awareness in the preservation of trees due to the Green Mark legislation, Prince's TreeCare+ consultants have played a crucial part in aiding the developer or main-contractor on the following –

- **Worksite Planning to encompass the Preservation of existing Trees**
- **Necessities of Tree Preservation**
- **Tree Transplantation**
- **Restoration of Trees**
- **Maintenance of Trees in Transit (with Arborist's reports)**

Prince's TreeCare+ consultants will also be at hand to advice on the maintenance of Trees and our maintenance services do include the following –

- **Tree Pruning**
- **Pollarding**
- **Crown Reduction**

Having been founded in the 1950s, the Prince's name comes with the assurance that our TreeCare+ consultants are armed with a knowledge base in Trees and Plants which spans more than 5 decades and are ready to assist you.

PRINCE'S CERTIFIED ARBORISTS



Kumar
SG - 0423A



Rameshkumar
SG - 0495A



Ramesh
SG - 0395A



Serene
SG - 0352A

Prince's Landscape & Construction Pte Ltd
A 53 Sungei Tengah Road Singapore 698998
T +(65) 6763 7000 | F +(65) 6892 2700 | E plant@prince.com.sg